



FILED this 13th day of NOV. 2014
2:40 P M
CAROL HOLCOMB
COUNTY CLERK, CALDWELL COUNTY, TEXAS
By Allison Ferry Deputy

Notice of Meeting
Commissioners Court of Caldwell County, Texas

Notice is hereby given that a meeting of the Caldwell County Commissioners Court will be held on the 17th day of November, 2014 at 9:00 A.M. in the Commissioners Courtroom located at 1403 Blackjack Street, Lockhart, Texas at which time the following subjects will be discussed, considered, passed or adopted, to wit:

Note: Commissioners Court Meeting packets are prepared several days prior to each meeting. This information is reviewed and studied by the Court members, eliminating lengthy discussions to gain a basic understanding. Timely action and short discussion on agenda items does not reflect lack of thought or analysis on the part of the Court.

Start times for regular agenda items are tentative; some items may be held earlier or later than the scheduled time.

For the convenience and comfort of members of the public and Caldwell County officials and employees, the Commissioners Court may take a recess from 10:30-10:45 a.m. and from noon to 1:30 p.m.

Agenda

Call Meeting to order.

2014.11.17.01 Invocation. Lockhart Ministry Alliance.

2014.11.17.02 Pledge of Allegiance to the Flags. (Texas Pledge: Honor the Texas flag; I pledge allegiance to thee, Texas, one state under God, one and indivisible).

2014.11.17.03 Announcements: Items or comments from Court Members or Staff.

2014.11.17.04 Citizens' Comments: At this time any person may speak to Commissioners Court if they have filled out a Caldwell County Commissioners Court Participation Form. Comments will be limited to four (4) minutes per person. No action will be taken on these items and no discussion will be had between the speaker(s) and members of the Court. The Court does retain the right to correct factual inaccuracies made by the speakers. (If longer than 30 minutes, then the balance of comments will continue as the last agenda item of the day).

2014.11.17.05 Consent Agenda. (Any member of the Court may request that an item within the Consent Agenda to be moved to the Regular Agenda for further discussion and action).

A. To approve Commissioners Court Minutes for November 10th, 2014.

- B. To approve Continuation Certificate Bond No. 15530860 for Court Clerk, Jenifer Watts, for Caldwell County in the amount of One Thousand for the term beginning December 11, 2014 and ending December 11, 2015.

2014.11.17.06 Reports.

Unit Road Systems Report – Dwight Jeffrey
Veteran's Report – David Francis
Maintenance Report – Curtis Weber

2014.11.17.07 Special Presentations. None.

(ALL OTHER AGENDA ITEMS)

- 2014.11.17.08 Discussion/Action** to approve Budget Amendments #2013-18, #2013-19, #2013-20, and #2013-21 as the final budget amendments for Fiscal Year 2013-2014. **Cost:** None; **Speaker:** Judge Bonn/Larry Roberson; **Backup:** 1.
- 2014.11.17.09 Discussion/Action** to select a real estate brokerage firm to represent Caldwell County in the sale the buildings at 201 E. San Antonio St. and 100 E. Market St. **Cost:** None; **Speaker:** Judge Bonn/Larry Roberson; **Backup:** None.
- 2014.11.17.10 Discussion/Action** to approve smoke detector system to be installed and monitored by Taylor Security Systems, Inc., at 505 Fannin Street, Luling, Texas. **Cost:** \$6,640 and \$35 per month, quarterly billing; **Speaker:** Commissioner Roland; **Backup:** 1.
- 2014.11.17.11 Discussion/Action** to apply for the FEMA Assistance to Firefighters Grant Program (AFG) to purchase necessary P25 compliant radio equipment and provide the matching funds for the Caldwell County Fire Departments participation. Matching funds not to exceed \$50,000. **Cost:** Not to exceed \$50,000; **Speaker:** Commissioner Muñoz; **Backup:** 1.
- 2014.11.17.12 Discussion/Action** regarding Burn Ban for Caldwell County. **Cost:** None; **Speaker:** Martin Ritchey; **Backup:** None.
- 2014.11.17.13 Discussion/Action** to canvass the November 4th, 2014 general constitutional and special election results. **Cost:** None; **Speaker:** Judge Bonn; **Backup:** 1.
- 2014.11.17.14 Discussion/Action** to approve the 2015 Caldwell County Employee Holiday calendar. **Cost:** None; **Speaker:** Judge Bonn; **Backup:** 1
- 2014.11.17.15 Discussion/Action** to approve the Caldwell County Employee Manual. **Cost:** None; **Speaker:** Judge Bonn/Deborah Kortan; **Backup:** None.
- 2014.11.17.16 Adjournment**

As authorized by the Texas Government Code, the Commissioners' Court of Caldwell, County, Texas reserves the right to adjourn into Executive Session at any time during the course of this meeting to discuss any of the matters listed above as they may relate to Texas Government Code Section 551.071(1) (Consultation with Attorney about pending or contemplated litigation or settlement offers);

Texas Government Code Section 551.071(2) (Consultation with Attorney when the Attorney's obligations under the Texas Disciplinary Rules of Professional Conduct of the State Bar of Texas conflicts with Chapter 551 of the Texas Government Code);

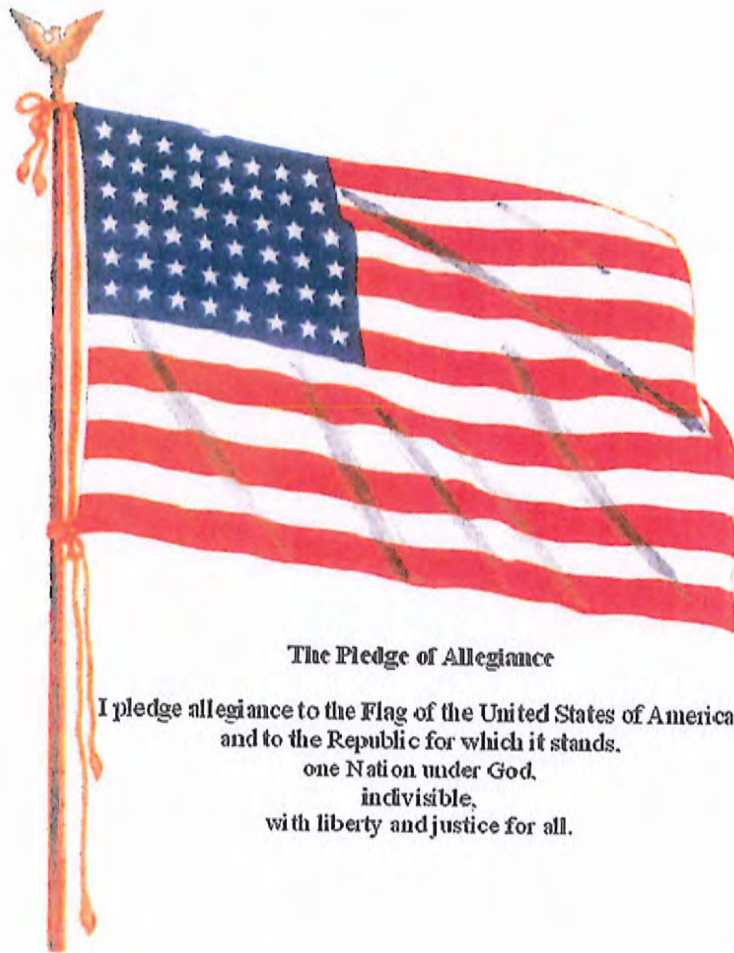
Texas Government Code Section 551.072 (Deliberations About Real Property); Texas Government Code Section 551.073 (Deliberations about Gifts and Donations); Texas Government Code Section 551.074 (Personnel Matters); Texas Government Code Section 551.0745 (Deliberations about a County Advisory Body); Texas Government Code Section 551.076 (Deliberations about Security Devices); and Texas Government Code Section 551.087 (Economic Development Negotiations).

In the event that the Court adjourns into Executive Session, unless otherwise specified on the agenda, the Court will announce any other parties who are authorized to be present during the deliberations in Executive Session and will announce under what section of the Texas Government Code the Commissioner's Court is using as its authority to enter into an Executive Session. The meeting facility is wheelchair accessible and accessible parking spaces are available. Request for accommodations or interpretive services must be made 48 hours prior to this meeting. Please contact the County Judge's office at 512-398-1808 for further information.

www.co.caldwell.tx.us

**Invocation – Lockhart Ministry
Alliance**

Pledge of Allegiance to the Flag.



The Pledge of Allegiance

I pledge allegiance to the Flag of the United States of America,
and to the Republic for which it stands,
one Nation under God,
in-divisible,
with liberty and justice for all.

**(Texas Pledge: Honor the Texas flag;
I pledge allegiance to thee, Texas,
one state under God, one and
indivisible).**

Pledge to the Texas Flag



Honor the Texas
Flag; I pledge
allegiance to thee,
Texas, one state
under God, one and
indivisible

Announcements:

**Items or comments from Court
Members or Staff.**

Citizens' Comments:

At this time any person may speak to Commissioners Court if they have filled out a Caldwell County Commissioners Court Participation Form. Comments will be limited to four (4) minutes per person. No action will be taken on these items and no discussion will be had between the speaker(s) and members of the Court. The Court does retain the right to correct factual inaccuracies made by the speakers. (If longer than 30 minutes, then the balance of comment will continue as the last agenda item of the day).

2014.11.17.05 Consent Agenda. (Any member of the Court may request that an item within the Consent Agenda to be moved to the Regular Agenda for further discussion and action).

A.

CALDWELL COUNTY
COMMISSIONERS COURT MINUTES
1403 Blackjack Street, Lockhart, Texas
Regular Meeting November 10, 2014 9:00 a.m.



TOM D. BONN County Judge
CAROL HOLCOMB County Clerk

ALFREDO MUÑOZ Commissioner Pct. 1
FRED F. BUCHHOLTZ Commissioner Pct.2
NETO MADRIGAL Commissioner Pct. 3
JOE IVAN ROLAND Commissioner Pct.4

Commissioner Roland arrived @ 8:35 a.m.

8:30 A.M.

WORKSHOP (No Action): Report from program manager on remodeling of the new Caldwell County Judicial and Service Center. No action will be taken at this time.
Project Manager Les Reddin showed slides and reviewed the progress that has taken place the past two weeks. The project is at 95% complete and the Certificate of Occupancy is expected to be received on November 17, 2014.

Commissioner Madrigal arrived @ 8:55

Call Meeting to order.

Judge welcomes everyone to the meeting today.

- 2014.11.10.01 Invocation.** Lockhart Ministry Alliance.
Pastor Rob Clopton with First United Methodist Church opened the meeting with prayer.
- 2014.11.10.02 Pledge of Allegiance to the Flags.** (Texas Pledge: Honor the Texas flag; I pledge allegiance to thee, Texas, one state under God, one and indivisible).
Judge Bonn led all present in the Pledge to both Flags.
- 2014.11.10.03 Announcements:** Items or comments from Court Members or Staff.
Judge Bonn announced a few times and locations for the Veterans Day gatherings for Tuesday. He asked for everyone to keep Marie Cavanaugh's daughter in prayer as she was undergoing surgery. Commissioner Roland thanked God. Commissioner Madrigal said "Amen" to that. Commissioner Buchholtz congratulated Eddie Moses for winning the election for Commissioner Precinct 2, beginning January. He also congratulated Commissioner Roland for being re-elected and Kenneth Shawe for being elected County Judge.
- 2014.11.10.04 Citizens' Comments:** At this time any person may speak to Commissioners Court if they have filled out a Caldwell County Commissioners Court Participation Form. Comments will be limited to four (4) minutes per person. No action will be taken on these items and no discussion will be had between the speaker(s) and members of the Court. The Court does retain the right to correct factual inaccuracies made by the speakers. (If longer than 30 minutes, then the balance of comments will continue as the last agenda item of the day).
No Speakers
- 2014.11.10.05 Consent Agenda.** (Any member of the Court may request that an item within the Consent Agenda to be moved to the Regular Agenda for further discussion and action).
- A. Pay Bills in the amount of \$845,689.08 for November 10th, 2014.
 - B. To approve Commissioners Court Minutes for October 27th and October 31st, 2014.
 - C. To approve Invoice #213 for October 2014 timesheet for Les Reddin, LongLife Projects in the amount of \$8,700 for the Justice Service Center project management work.

COMMISSIONERS COURT MINUTES
Regular Meeting on November 10, 2014

- D. To approve Application and Certificate for Payment #10 for Braun and Butler Construction in the amount of \$602,799.70 for the Caldwell County Justice Center.
- E. To approve Invoice #9 from Aulick & Associates in the amount of \$4,125 (33 hours at \$125/hour) for consultant services for the period of October 1st – 31st, 2014, regarding transportation projects for Caldwell County.
- Motion made by Commissioner Muñoz, second by Commissioner Madrigal to approve the Consent Agenda items A-E. All Voting "Aye"

2014.11.10.06 Reports.

Elections Department Report – Pamela Ohlendorf

Pamela Ohlendorf reported that combined with early voting, there were a total of 8992 votes. Judge Bonn congratulates all of the winning candidates. Commissioner Madrigal thanks Pamela and her office for all the hard work that they have put in.

Septic and Subdivision Report – Kasi Miles

Kasi Miles gave the report for Septic and Subdivision. She gave a more detailed report to explain the growth in the County. The report covered October 2013 thru September 2014. Kasi added that there will be 6 subdivisions coming before the Court to finalize this year. The growth will be substantial in Precinct 3 and 4.

Treasurer's Report – Lori Rangel

County Treasurer Lori Rangel gave the report prepared for reports ending September 30, 2014

2014.11.10.07 Special Presentations. None.

(ALL OTHER AGENDA ITEMS)

- 2014.11.10.08 Discussion/Action** to open bids on ten (10) lots of salvaged property advertised for sale. The court may accept or reject any or all bidders.
Motion made by Commissioner Madrigal, second by Commissioner Roland to authorize the Maintenance department to dispose of the 10 lots of property. All Voting "Aye" The computer equipment and any hazardous material will be taken to a recycle that accepts it.
- 2014.11.10.09 Discussion/Action** to open bids one (1) 40' feral hog drop net system advertised for sealed bids. The court may accept or reject any or all bidders.
Motion made by Commissioner Muñoz, second by Commissioner Madrigal to accept the bid from Texas Wildlife Damage Management for the amount of \$4,000.00 for one (1) 40' feral hog drop net system. All Voting "Aye"
- 2014.11.10.10 Discussion** on the completed audit of the treasurer's office and the non-submittal of court fees collected but not paid to the state as required by statute.
County Auditor Larry Roberson explains that his office has discovered approximately \$259,000 in fees for FTA and Civil Judicial Fees that have not been paid to the state for over 9 years. It was discovered since the implementation of the new software system. He has contacted the State and sent a copy of the report. His goal is to try and get even and come to an understanding to settle it. The fees can be paid from the excess fund balance reserve from last year's budget.
- 2014.11.10.11 Discussion/Action** to approve action item #17 regarding movers cost to provide maintenance on critical equipment through Braun & Butler for the new Justice Center not to exceed \$14,983.
Motion made by Commissioner Madrigal, second by Commissioner Muñoz to approve action item #17 regarding movers cost to provide moving services through Braun & Butler for the new Justice Center not to exceed \$14,983. All Voting "Aye" This will be from the owners contingency fund.

COMMISSIONERS COURT MINUTES
Regular Meeting on November 10, 2014

- 2014.11.10.12 Discussion/Action** to cancel the November 24th, 2014 Commissioners Court due to time constraints occurring because of the Thanksgiving holiday.
Motion made by Commissioner Madrigal, second by Commissioner Buchholtz to approve the cancellation of the November 24th, 2014 Commissioners Court due to time constraints occurring because of the Thanksgiving holiday. All Voting "Aye"
- 2014.11.10.13 Discussion/Action** to cancel the December 22nd, 2014 Commissioners Court due to time constraints occurring because of the Christmas holiday.
Motion made by Commissioner Madrigal, second by Commissioner Buchholtz approving the cancellation of the December 22nd, 2014 Commissioners Court meeting due to time constraints occurring because of the Christmas holiday. All Voting "Aye"
- 2014.11.10.14 Discussion/Action** to authorize the County Auditor to pay necessary bills for November and December as a result of cancellation of the November 24th, 2014 and December 22nd, 2014 meetings because of time constraints for Thanksgiving and Christmas holidays.
Motion made by Commissioner Muñoz, second by Commissioner Roland to authorize the County Auditor to pay necessary bills for November and December as a result of cancellation of the November 24th, 2014 and December 22nd, 2014 meetings because of time constraints for Thanksgiving and Christmas holidays. All Voting "Aye"
- 2014.11.10.15 Discussion/Action** to hold commissioners court in the 2nd floor courtroom at the Caldwell County courthouse, 110 S. Main Street, Lockhart, Texas, on Monday, November 17th or Monday, December 8th, 2014.
Motion made by Commissioner Madrigal, second by Commissioner Buchholtz to hold commissioners court in the 2nd floor courtroom at the Caldwell County Courthouse, 110 S. Main Street, Lockhart, Texas, on Monday, December 8th, 2014. All Voting "Aye"
- 2014.11.10.16 Discussion/Action** concerning in the 2nd floor courtroom in the Caldwell County courthouse. **Cost:** TBD; **Speaker:** Judge Bonn/Bob Karasch/Pat Horn; **Backup:** 1.
Motion made by Commissioner Muñoz, second by Commissioner Buchholtz to have both speakers return and advise the court on sound and audio issues before the December 8th meeting. All Voting "Aye"
- 2014.11.10.17 Discussion/Action** regarding Burn Ban for Caldwell County.
Motion made by Commissioner Roland, second by Commissioner Madrigal to the leave the Burn Ban off at this time. All Voting "Aye"
- 2014.11.10.18 Adjournment**
Motion made by Commissioner Muñoz, second by Commissioner Madrigal to Adjourn. All Voting "Aye"

TOM D. BONN, County Judge

B.

CARL R. OHLENDORF INSURANCE

115 SOUTH MAIN STREET
LOCKHART, TX 78644
Phone : 512-398-2318

Caldwell County
P. O. Box 98
Lockhart, TX 78644

INVOICE # 14251		Page 1
ACCOUNT NO. CALDW01	OP KH	DATE 11/04/14
BOND Dec Page		
POLICY # 15530860		
COMPANY Western Surety		
PRODUCER Adair H. Rucker		
EFFECTIVE 12/11/14	EXPIRATION 12/11/15	

Itm #	Eff Date	Trn	Description	Amount
128613	12/11/14	REN	Jennifer Watts - Court Clerk	\$ 50.00
Invoice Balance:				\$ 50.00

PLEASE REFER TO BOND/POLICY NUMBER WHEN MAKING PAYMENT



Western Surety Company

CONTINUATION CERTIFICATE

Western Surety Company hereby continues in force Bond No. 15530860 briefly described as COURT CLERK COUNTY OF CALDWELL,
 _____,
 for JENIFER WATTS
 _____, as Principal,
 in the sum of \$ ONE THOUSAND AND NO/100 Dollars, for the term beginning December 11, 2014, and ending December 11, 2015, subject to all the covenants and conditions of the original bond referred to above.

This continuation is issued upon the express condition that the liability of Western Surety Company under said Bond and this and all continuations thereof shall not be cumulative and shall in no event exceed the total sum above written.

Dated this 07 day of August, 2014.



WESTERN SURETY COMPANY

By Paul T. Bruflat
 Paul T. Bruflat, Vice President



THIS "Continuation Certificate" MUST BE FILED WITH THE ABOVE BOND.

Western Surety Company

POWER OF ATTORNEY

KNOW ALL MEN BY THESE PRESENTS:

That WESTERN SURETY COMPANY, a corporation organized and existing under the laws of the State of South Dakota, and authorized and licensed to do business in the States of Alabama, Alaska, Arizona, Arkansas, California, Colorado, Connecticut, Delaware, District of Columbia, Florida, Georgia, Hawaii, Idaho, Illinois, Indiana, Iowa, Kansas, Kentucky, Louisiana, Maine, Maryland, Massachusetts, Michigan, Minnesota, Mississippi, Missouri, Montana, Nebraska, Nevada, New Hampshire, New Jersey, New Mexico, New York, North Carolina, North Dakota, Ohio, Oklahoma, Oregon, Pennsylvania, Rhode Island, South Carolina, South Dakota, Tennessee, Texas, Utah, Vermont, Virginia, Washington, West Virginia, Wisconsin, Wyoming, and the United States of America, does hereby make, constitute and appoint

Paul T. Bruflat of Sioux Falls,
State of South Dakota, its regularly elected Vice President,
as Attorney-in-Fact, with full power and authority hereby conferred upon him to sign, execute, acknowledge and deliver for and on its behalf as Surety and as its act and deed, the following bond:

One COURT CLERK COUNTY OF CALDWELL
bond with bond number 15530860
for JENIFER WATTS
as Principal in the penalty amount not to exceed: \$1,000.00

Western Surety Company further certifies that the following is a true and exact copy of Section 7 of the by-laws of Western Surety Company duly adopted and now in force, to-wit:

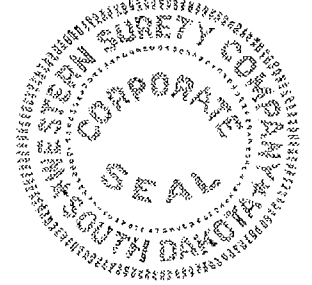
Section 7. All bonds, policies, undertakings, Powers of Attorney, or other obligations of the corporation shall be executed in the corporate name of the Company by the President, Secretary, any Assistant Secretary, Treasurer, or any Vice President, or by such other officers as the Board of Directors may authorize. The President, any Vice President, Secretary, any Assistant Secretary, or the Treasurer may appoint Attorneys-in-Fact or agents who shall have authority to issue bonds, policies, or undertakings in the name of the Company. The corporate seal is not necessary for the validity of any bonds, policies, undertakings, Powers of Attorney or other obligations of the corporation. The signature of any such officer and the corporate seal may be printed by facsimile.

In Witness Whereof, the said WESTERN SURETY COMPANY has caused these presents to be executed by its Vice President Paul T. Bruflat with the corporate seal affixed this 07 day of August, 2014.

ATTEST
L. Nelson
L. Nelson, Assistant Secretary

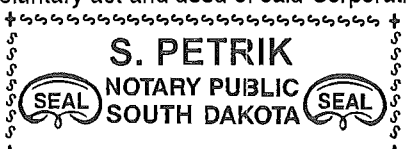
WESTERN SURETY COMPANY
By Paul T. Bruflat
Paul T. Bruflat, Vice President

STATE OF SOUTH DAKOTA }
COUNTY OF MINNEHAHA } SS



On this 07 day of August, 2014, before me, a Notary Public, personally appeared Paul T. Bruflat and L. Nelson

who, being by me duly sworn, acknowledged that they signed the above Power of Attorney as Vice President and Assistant Secretary, respectively, of the said WESTERN SURETY COMPANY, and acknowledged said instrument to be the voluntary act and deed of said Corporation.



S. Petrik
Notary Public

My Commission Expires August 11, 2016



2014.11.17.06 Reports.

Unit Road Systems Report – Dwight Jeffrey

Veteran's Report – David Francis

Maintenance Report – Curtis Weber

2015 Budget Summary

End-of-Year Report: 10/1/2014 - 11/10/2014

Caldwell County

All Assignments

Account Code	Account Name	Budgeted Amount	Recorded Invoices	Estimated Residual
002-1101-2140	Uniforms	\$32,000.00	\$3,618.02	\$28,381.98
002-1101-3116	Culvert Pipe	\$15,000.00	\$0.00	\$15,000.00
002-1101-3130	Operating Supplies	\$35,000.00	\$7,603.40	\$27,396.60
002-1101-3143	Flex Base Materials	\$200,000.00	\$24,436.01	\$175,563.99
002-1101-3153	Aggregate/Gravel	\$250,000.00	\$101,585.87	\$148,414.13
002-1101-3163	Fuel	\$240,000.00	\$19,752.76	\$220,247.24
002-1101-3170	Lubricants	\$15,000.00	\$0.00	\$15,000.00
002-1101-3181	Signs	\$20,000.00	\$1,790.30	\$18,209.70
002-1101-3190	Tires	\$30,000.00	\$8,662.69	\$21,337.31
002-1101-4610	Rentals	\$4,500.00	\$95.20	\$4,404.80
002-1101-4620	Dust Control	\$100,000.00	\$12,211.83	\$87,788.17
002-1101-4630	Seal Coating	\$210,000.00	\$0.00	\$210,000.00
002-1102-3136	Supplies/Small Tools	\$70,000.00	\$6,005.44	\$63,994.56
002-1102-4510	Repairs & Maintenance	\$30,000.00	\$863.00	\$29,137.00
002-1103-2140	Uniforms (Fleet Maint)	\$3,500.00	\$332.16	\$3,167.84
002-1103-3110	Office Supplies (Fleet Maint)	\$500.00	\$0.00	\$500.00
002-1103-3135	Operating Supplies (Fleet Maint)	\$60,000.00	\$3,578.72	\$56,421.28
002-1103-3165	Oil & Lubricants (Fleet Maint)	\$7,850.00	\$0.00	\$7,850.00
002-1103-3190	Tires (Fleet Maint)	\$15,000.00	\$525.84	\$14,474.16
002-1103-4529	Contract Labor (Fleet Maint)	\$15,000.00	\$69.95	\$14,930.05

Column Totals = \$1,353,350.00 \$191,131.19 \$1,162,218.81

Daily Work History & Materials Used
(By Location)

Period: 10/1/2014 - 10/31/2014
Work: All categories and types

All Assignments
Caldwell County

Work done in Area: Precinct 1

CR 114A TULIP TR

Date	Work Done	R&B Material Used	Amount Used	Expense
10/7/2014	Mowed grass (0.1 miles)			

CR 194 CLEAR FORK RD (From CR 205 to Hwy. 86)

Date	Work Done	R&B Material Used	Amount Used	Expense
10/6/2014	Mowed grass (1.1 miles)			
10/15/2014	Patched road surface (1.1 miles) (Type D - 2 T.)	Type D Cold Mix	2 ton(s)	\$130.00
			Location Total =	\$130.00

CR 196 BROWNSBORO LN (From FM 1322 to CR 205)

Date	Work Done	R&B Material Used	Amount Used	Expense
10/6/2014	Mowed grass (0.6 miles)			

CR 196 BROWNSBORO LN (Loop off FM 1322)

Date	Work Done	R&B Material Used	Amount Used	Expense
10/6/2014	Mowed grass (0.2 miles)			

CR 196A HARRIS CT

Date	Work Done	R&B Material Used	Amount Used	Expense
10/6/2014	Mowed grass (0.2 miles)			

CR 197 YOUNG LN

Date	Work Done	R&B Material Used	Amount Used	Expense
10/1/2014	Mowed grass (4.5 miles)			
10/3/2014	Cleared debris or fallen tree			
10/14/2014	Bladed surface (0.1 miles)			
10/30/2014	Patched road surface (1 mile) (Type D - 6 T.)	Type D Cold Mix	6 ton(s)	\$390.00
10/31/2014	Patched road surface (2 miles) (Type D - 8 T.)	Type D Cold Mix	8 ton(s)	\$520.00

Daily Work History & Materials Used
(By Location)

Period: 10/1/2014 - 10/31/2014
Work: All categories and types

All Assignments
Caldwell County

Work done in Area: Precinct 1

CR 197 YOUNG LN

Date	Work Done	R&B Material Used	Amount Used	Expense
			Location Total =	\$910.00

CR 200 WELLS RD

Date	Work Done	R&B Material Used	Amount Used	Expense
10/1/2014	Mowed grass (1.1 miles)			
10/3/2014	Cleared debris or fallen tree			
10/27/2014	Patched road surface (0.2 miles) (Type D - 2 T.)	Type D Cold Mix	2 ton(s)	\$130.00
			Location Total =	\$130.00

CR 201 CATTLEMENS ROW (FM 713 to dead end)

Date	Work Done	R&B Material Used	Amount Used	Expense
10/14/2014	Bladed surface (0.8 miles)			

CR 203 SHADY HOLLOW RD

Date	Work Done	R&B Material Used	Amount Used	Expense
10/9/2014	Spot bladed washes (0.1 miles)			

CR 205 SEAWILLOW RD (From No. FM 1322 to CR 197)

Date	Work Done	R&B Material Used	Amount Used	Expense
10/2/2014	Mowed grass (4.5 miles)			

CR 205 SEAWILLOW RD (From CR 197 to FM 1322 So.)

Date	Work Done	R&B Material Used	Amount Used	Expense
10/2/2014	Mowed grass (1 mile)			
10/6/2014	Mowed grass (4.5 miles)			
10/15/2014	Patched road surface (3 miles) (Type D - 2 T.)	Type D Cold Mix	2 ton(s)	\$130.00
			Location Total =	\$130.00

Daily Work History & Materials Used
(By Location)

Period: 10/1/2014 - 10/31/2014
Work: All categories and types

All Assignments
Caldwell County

Work done in Area: Precinct 1

CR 206 LAY RD

Date	Work Done	R&B Material Used	Amount Used	Expense
10/2/2014	Mowed grass (0.6 miles)			

CR 208 SOUTH LANE

Date	Work Done	R&B Material Used	Amount Used	Expense
10/7/2014	Mowed grass (0.8 miles)			

CR 209 BRUSHY BRANCH RD

Date	Work Done	R&B Material Used	Amount Used	Expense
10/1/2014	Mowed grass (1.2 miles)			
10/14/2014	Bladed surface (1.2 miles)			

CR 212 REAVIS RD

Date	Work Done	R&B Material Used	Amount Used	Expense
10/9/2014	Spot bladed washes (0.1 miles)			

CR 214 GRAHAM RD

Date	Work Done	R&B Material Used	Amount Used	Expense
10/14/2014	Bladed surface (0.6 miles)			

CR 215 WESTWOOD RD

Date	Work Done	R&B Material Used	Amount Used	Expense
10/8/2014	Applied oil for dust control (1.5 miles) (SS1 - 200 G.) Bladed surface (1 mile) (W. FM 20 to CR 216)	SS1 Slow Set Emulsion-Pick up	200 gallon(s)	\$456.00
10/9/2014	Applied oil for dust control (2 miles) (SS1 - 200 G.)	SS1 Slow Set Emulsion-Pick up	200 gallon(s)	\$456.00
10/10/2014	Applied oil for dust control (1.5 miles) (SS1 - 200 G.)	SS1 Slow Set Emulsion-Pick up	200 gallon(s)	\$456.00

Daily Work History & Materials Used
(By Location)

Period: 10/1/2014 - 10/31/2014
Work: All categories and types

All Assignments
Caldwell County

Work done in Area: Precinct 1

CR 215 WESTWOOD RD

Date	Work Done	R&B Material Used	Amount Used	Expense
			Location Total =	\$1,368.00

CR 217 OLD FENTRESS RD

Date	Work Done	R&B Material Used	Amount Used	Expense
10/31/2014	Put up 'Speed Limit' sign	#30901 - 10' Green U-Channel Post	1 each	\$19.59
		#R2-1-35 - Speed Limit 35 - (18x24)	1 each	\$23.25
			Location Total =	\$42.84

CR 218 BOGGY CREEK RD (C/L to I-130)

Date	Work Done	R&B Material Used	Amount Used	Expense
10/1/2014	Trimmed brush or trees (0.2 miles)			
10/6/2014	Trimmed brush or trees (0.1 miles)			
10/8/2014	Spot bladed washes (1 mile)			

Material Total for this Area = \$2,710.84

Daily Work History & Materials Used
(By Location)

Period: 10/1/2014 - 10/31/2014
Work: All categories and types

All Assignments
Caldwell County

Work done in Area: Precinct 2

CR 30 RUDOLPH LN

Date	Work Done	R&B Material Used	Amount Used	Expense
10/10/2014	Mowed grass (0.2 miles)			

CR 31 RAWHIDE LN

Date	Work Done	R&B Material Used	Amount Used	Expense
10/1/2014	Applied oil for dust control (0.1 miles) (SS1 - 25 G.)	SS1 Slow Set Emulsion-Pick up	25 gallon(s)	\$57.00
10/10/2014	Mowed grass (0.1 miles)			

Location Total = \$57.00

CR 32 ANGLE RD

Date	Work Done	R&B Material Used	Amount Used	Expense
10/10/2014	Mowed grass (0.8 miles)			

CR 33 HAWK RD

Date	Work Done	R&B Material Used	Amount Used	Expense
10/10/2014	Mowed grass (0.2 miles)			

CR 34 DAVIS RD

Date	Work Done	R&B Material Used	Amount Used	Expense
10/13/2014	Mowed grass (0.2 miles)			

CR 34A DOW LN

Date	Work Done	R&B Material Used	Amount Used	Expense
10/13/2014	Mowed grass (0.1 miles)			

CR 35 HACKBERRY ST

Date	Work Done	R&B Material Used	Amount Used	Expense
10/10/2014	Blade cold mix on road surface (0.2 miles) (Type D - 6 T; Type A - 12 T)	Type A Black Base	12 ton(s)	\$756.00
		Type D Cold Mix	6 ton(s)	\$390.00

Daily Work History & Materials Used
(By Location)

Period: 10/1/2014 - 10/31/2014
Work: All categories and types

All Assignments
Caldwell County

Work done in Area: Precinct 2

CR 35 HACKBERRY ST

Date	Work Done	R&B Material Used	Amount Used	Expense
10/13/2014	Mowed grass (0.2 miles)			
			Location Total =	\$1,146.00

CR 105 RIVER PARK RD

Date	Work Done	R&B Material Used	Amount Used	Expense
10/13/2014	Mowed grass (2.3 miles)			
10/14/2014	Bladed surface (2.3 miles)			

CR 115 BUGTUSSLE LANE (FM 671 to CR 112)

Date	Work Done	R&B Material Used	Amount Used	Expense
10/8/2014	Mowed grass (1 mile) (CR CR 126 to CR 112)			
10/9/2014	Mowed grass (2 miles) (CR 126 to FM 671)			

CR 115 WASHBURN RD (FM 2984 to FM 671)

Date	Work Done	R&B Material Used	Amount Used	Expense
10/7/2014	Patched road surface (3.8 miles) (Type D - 2 T.)	Type D Cold Mix	2 ton(s)	\$130.00
10/14/2014	Mowed grass (3.8 miles)			
			Location Total =	\$130.00

CR 116 PLANT RD (Hwy. 80 to CR 115)

Date	Work Done	R&B Material Used	Amount Used	Expense
10/9/2014	Mowed grass (2.9 miles)			

CR 116 PLANT RD (Hwy. 80 to River)

Date	Work Done	R&B Material Used	Amount Used	Expense
10/1/2014	Put up COUNTY road name sign	County Road Name Sign	2 each	\$13.90
10/9/2014	Mowed grass (0.9 miles)			
			Location Total =	\$13.90

Daily Work History & Materials Used
(By Location)

Period: 10/1/2014 - 10/31/2014
Work: All categories and types

All Assignments
Caldwell County

Work done in Area: Precinct 2

CR 117 MERIDIAN LN

Date	Work Done	R&B Material Used	Amount Used	Expense
10/2/2014	Patched road surface (0.2 miles) (Type D - 2 T.)	Type D Cold Mix	2 ton(s)	\$130.00
10/7/2014	Patched road surface (0.9 miles) (Type D - 1 T.)	Type D Cold Mix	1 ton(s)	\$65.00
10/9/2014	Mowed grass (0.9 miles)			
			Location Total =	\$195.00

CR 118 STAIRTOWN LOOP (Hwy. 80 to CR 116)

Date	Work Done	R&B Material Used	Amount Used	Expense
10/9/2014	Mowed grass (0.2 miles)			

CR 118 STAIRTOWN LP (Hwy. 80 to Hwy. 80)

Date	Work Done	R&B Material Used	Amount Used	Expense
10/10/2014	Mowed grass (0.9 miles)			
10/13/2014	Patched road surface (1 mile) (Type D - 2 T.)	Type D Cold Mix	2 ton(s)	\$130.00
			Location Total =	\$130.00

CR 119 STAIRTOWN RD

Date	Work Done	R&B Material Used	Amount Used	Expense
10/10/2014	Mowed grass (0.8 miles)			

CR 120 PECAN CT.

Date	Work Done	R&B Material Used	Amount Used	Expense
10/1/2014	Applied oil for dust control (0.3 miles) (SS1 - 50 G.)	SS1 Slow Set Emulsion-Pick up	50 gallon(s)	\$114.00
10/10/2014	Mowed grass (0.2 miles)			
			Location Total =	\$114.00

CR 121 SCENIC VIEW RD.

Date	Work Done	R&B Material Used	Amount Used	Expense
10/10/2014	Mowed grass (0.9 miles)			

Daily Work History & Materials Used
(By Location)

Period: 10/1/2014 - 10/31/2014
Work: All categories and types

All Assignments
Caldwell County

Work done in Area: Precinct 2

CR 122 AUSTIN RD

Date	Work Done	R&B Material Used	Amount Used	Expense
10/13/2014	Patched road surface (0.5 miles) (Type D - 1 T. Mowed grass (1.3 miles)	Type D Cold Mix	1 ton(s)	\$65.00
10/14/2014	Bladed surface (1.3 miles)			
			Location Total =	\$65.00

CR 122A BROOK RD

Date	Work Done	R&B Material Used	Amount Used	Expense
10/13/2014	Mowed grass (0.2 miles)			

CR 123 UNION HILL RD

Date	Work Done	R&B Material Used	Amount Used	Expense
10/14/2014	Mowed grass (1.5 miles)			

CR 124 SUNSET TR

Date	Work Done	R&B Material Used	Amount Used	Expense
10/14/2014	Mowed grass (0.5 miles)			

CR 127A LITTLE LN

Date	Work Done	R&B Material Used	Amount Used	Expense
10/8/2014	Mowed grass (0.4 miles)			

CR 127 OAK GROVE RD

Date	Work Done	R&B Material Used	Amount Used	Expense
10/8/2014	Mowed grass (2.3 miles) (From FM 86 end) Mowed grass (1 mile)			

CR 128 SALT FLAT RD

Date	Work Done	R&B Material Used	Amount Used	Expense
------	-----------	-------------------	-------------	---------

Daily Work History & Materials Used
(By Location)

Period: 10/1/2014 - 10/31/2014
Work: All categories and types

All Assignments
Caldwell County

Work done in Area: Precinct 2

CR 128 SALT FLAT RD

Date	Work Done	R&B Material Used	Amount Used	Expense
10/6/2014	Hauled off brush (6.5 miles)			
10/7/2014	Mowed grass (4.1 miles) (CR 130 to FM 1322)			
10/8/2014	Mowed grass (2.3 miles) (CR 130 to C/L)			
10/14/2014	Bladed surface (2.1 miles)			
10/15/2014	Bladed surface (2.5 miles)			

CR 129 PUMPER RD

Date	Work Done	R&B Material Used	Amount Used	Expense
10/7/2014	Mowed grass (0.4 miles)			

CR 130 SODA SPRINGS RD (FM 86 to FM 1322)

Date	Work Done	R&B Material Used	Amount Used	Expense
10/6/2014	Hauled off brush (1 mile)			
	Repaired bridge approaches (Type D - .50 T.)	Type D Cold Mix	0.5 ton(s)	\$32.50
10/7/2014	Mowed grass (0.6 miles)			
10/31/2014	Put up COUNTY road name sign @ FM 1322	County Road Name Sign	2 each	\$13.90
			Location Total =	\$46.40

CR 130 SODA SPRINGS RD (FM 1322 to CR 139)

Date	Work Done	R&B Material Used	Amount Used	Expense
10/6/2014	Mowed grass (5.7 miles) (CR 139 to CR 128)			
	Repaired bridge approaches (Type D - .50 T.)	Type D Cold Mix	0.5 ton(s)	\$32.50
10/31/2014	Put up COUNTY road name sign @ CR 139	County Road Name Sign	2 each	\$13.90
			Location Total =	\$46.40

CR 131 BIGGS RD

Date	Work Done	R&B Material Used	Amount Used	Expense
10/10/2014	Mowed grass (2.7 miles)			

Daily Work History & Materials Used
(By Location)

Period: 10/1/2014 - 10/31/2014
Work: All categories and types

All Assignments
Caldwell County

Work done in Area: Precinct 2

CR 131 BIGGS RD

Date	Work Done	R&B Material Used	Amount Used	Expense
10/16/2014	Bladed surface; added base (1 mile) (3/4" base - 144 T.)	Type D Cold Mix	144 ton(s)	\$9,360.00
10/17/2014	Bladed surface; added base (1 mile) (3/4" base - 168 T.)	3/4" base to dust	168 ton(s)	\$2,430.96
10/20/2014	Bladed surface; added base (2 miles) (3/4" base - 48 T.)	3/4" base to dust	48 ton(s)	\$694.56
			Location Total =	\$12,485.52

CR 132 DERRICK RD

Date	Work Done	R&B Material Used	Amount Used	Expense
10/8/2014	Mowed grass (0.5 miles)			

CR 133 IVY SWITCH RD

Date	Work Done	R&B Material Used	Amount Used	Expense
10/16/2014	Mowed grass (4 miles)			
10/27/2014	Bladed surface (0.5 miles) (Spot bladed)			
10/30/2014	Repaired fence	T-Post	1 each	\$4.36
			Location Total =	\$4.36

CR 134A GRASS TRAIL

Date	Work Done	R&B Material Used	Amount Used	Expense
10/15/2014	Mowed grass (0.4 miles)			

CR 134 MULECREEK RD (Hwy. 90 to CR 133)

Date	Work Done	R&B Material Used	Amount Used	Expense
10/15/2014	Mowed grass (1.4 miles)			
10/22/2014	Trimmed brush or trees (0.4 miles)			
10/23/2014	Bladed surface (1 mile)			
	Trimmed brush or trees (0.4 miles)			

Daily Work History & Materials Used
(By Location)

Period: 10/1/2014 - 10/31/2014
Work: All categories and types

All Assignments
Caldwell County

Work done in Area: Precinct 2

CR 134 MULECREEK RD (Hwy. 90 to CR 133)

Date	Work Done	R&B Material Used	Amount Used	Expense
10/24/2014	Bladed surface; added base (1.4 miles) (3/4" base - 72 T.)	3/4" base to dust	72 ton(s)	\$1,041.84
			Location Total =	\$1,041.84

CR 134 MULECREEK RD (CR 133 to Gonzales Cty Line)

Date	Work Done	R&B Material Used	Amount Used	Expense
10/16/2014	Mowed grass (3.1 miles)			
10/21/2014	Bladed surface (1 mile)			
10/22/2014	Bladed surface; added base (1.5 miles) Spot bladed (3/4" base - 168 T.)	3/4" base to dust	168 ton(s)	\$2,430.96
10/24/2014	Trimmed brush or trees (0.5 miles)			
			Location Total =	\$2,430.96

CR 135B FAR SOUTH DR

Date	Work Done	R&B Material Used	Amount Used	Expense
10/14/2014	Mowed grass (0.4 miles)			

CR 135A SOUTHERN WAY

Date	Work Done	R&B Material Used	Amount Used	Expense
10/14/2014	Mowed grass (0.4 miles)			

CR 135 WHISPER RD

Date	Work Done	R&B Material Used	Amount Used	Expense
10/14/2014	Mowed grass (1.6 miles)			

CR 136 ARROW LN

Date	Work Done	R&B Material Used	Amount Used	Expense
10/14/2014	Mowed grass (0.4 miles)			

Daily Work History & Materials Used
(By Location)

Period: 10/1/2014 - 10/31/2014
Work: All categories and types

All Assignments
Caldwell County

Work done in Area: Precinct 2

CR 137 SUNFLOWER TR

Date	Work Done	R&B Material Used	Amount Used	Expense
10/10/2014	Mowed grass (2.6 miles)			

CR 138 MCNEIL CREEK RD

Date	Work Done	R&B Material Used	Amount Used	Expense
10/6/2014	Mowed grass (0.9 miles)			

CR 139 HARWOOD RD

Date	Work Done	R&B Material Used	Amount Used	Expense
10/2/2014	Mowed grass (6.3 miles) (FM 1322 To FM 1386)			
10/8/2014	Patched road surface (4 miles) (Type D - 5 T.)	Type D Cold Mix	5 ton(s)	\$325.00
10/13/2014	Put up COUNTY road name sign (@ CR 141)	County Road Name Sign	2 each	\$13.90
10/16/2014	Patched road surface (3 miles) (Type D - 5 T.)	Type D Cold Mix	5 ton(s)	\$325.00
10/17/2014	Mowed grass (1.5 miles)			
	Bladed surface (0.6 miles)			
			Location Total =	\$663.90

CR 139A LOST RD

Date	Work Done	R&B Material Used	Amount Used	Expense
10/2/2014	Mowed grass (0.5 miles)			

CR 140A PASTURE RD

Date	Work Done	R&B Material Used	Amount Used	Expense
10/1/2014	Mowed grass (0.6 miles)			
10/14/2014	Bladed surface (0.6 miles)			

CR 140 WATTSVILLE RD

Date	Work Done	R&B Material Used	Amount Used	Expense
10/1/2014	Mowed grass (2.1 miles)			

Daily Work History & Materials Used
(By Location)

Period: 10/1/2014 - 10/31/2014
Work: All categories and types

All Assignments
Caldwell County

Work done in Area: Precinct 2

CR 140 WATTSVILLE RD

Date	Work Done	R&B Material Used	Amount Used	Expense
10/6/2014	Bladed surface (0.9 miles)			
10/7/2014	Patched road surface (1.2 miles) (Type D - 5 T.)	Type D Cold Mix	5 ton(s)	\$325.00
10/14/2014	Trimmed brush or trees			
10/28/2014	Applied oil for dust control (1.5 miles) (SS1 - 200 G.)	SS1 Slow Set Emulsion-Pick up	200 gallon(s)	\$456.00
			Location Total =	\$781.00

CR 141 TENNEY CREEK RD

Date	Work Done	R&B Material Used	Amount Used	Expense
10/1/2014	Mowed grass (2 miles) (CR 142 to CR 139)			
10/2/2014	Hauled off brush (1 mile)			
10/3/2014	Cleared debris or fallen tree			
10/6/2014	Bladed surface (1.5 miles)			
10/13/2014	Put up COUNTY road name sign (@ CR 141-B)	County Road Name Sign	2 each	\$13.90
10/15/2014	Bladed surface (0.5 miles)			
10/16/2014	Bladed surface (1 mile)			
10/17/2014	Bladed surface (1 mile)			
10/31/2014	Put up COUNTY road name sign @ CR 145	County Road Name Sign	2 each	\$13.90
			Location Total =	\$27.80

CR 144A EBBON RD

Date	Work Done	R&B Material Used	Amount Used	Expense
10/1/2014	Mowed grass (0.4 miles)			
10/6/2014	Patched road surface (0.4 miles) (Type D - 1 T.)	Type D Cold Mix	1 ton(s)	\$65.00
10/14/2014	Trimmed brush or trees			
			Location Total =	\$65.00

CR 144 ROLLING OAKS DR

Date	Work Done	R&B Material Used	Amount Used	Expense
10/1/2014	Mowed grass (1.6 miles)			
10/2/2014	Patched road surface (0.5 miles) (Type D - 1 T.)	Type D Cold Mix	1 ton(s)	\$65.00

Daily Work History & Materials Used
(By Location)

Period: 10/1/2014 - 10/31/2014
Work: All categories and types

All Assignments
Caldwell County

Work done in Area: Precinct 2

CR 144 ROLLING OAKS DR

Date	Work Done	R&B Material Used	Amount Used	Expense
10/6/2014	Patched road surface (1.5 miles) (Type D - 3 T.)	Type D Cold Mix	3 ton(s)	\$195.00
10/14/2014	Trimmed brush or trees			
			Location Total =	\$260.00

CR 148 COACHWHIP RD

Date	Work Done	R&B Material Used	Amount Used	Expense
10/17/2014	Mowed grass (0.7 miles)			

CR 149 WAGONWHEEL RD

Date	Work Done	R&B Material Used	Amount Used	Expense
10/17/2014	Mowed grass (0.6 miles)			

CR 150 KIRK CORNERS

Date	Work Done	R&B Material Used	Amount Used	Expense
10/7/2014	Applied oil for dust control (2 miles) (SS1 - 200 G.)	SS1 Slow Set Emulsion-Pick up	200 gallon(s)	\$456.00
10/8/2014	Applied oil for dust control (2 miles) (SS1 - 200 G.)	SS1 Slow Set Emulsion-Pick up	200 gallon(s)	\$456.00
10/20/2014	Mowed grass (3.8 miles)			
			Location Total =	\$912.00

CR 151A BUCK BRANCH RD

Date	Work Done	R&B Material Used	Amount Used	Expense
10/23/2014	Mowed grass (1.5 miles)			

CR 151 SANDY FORK RD

Date	Work Done	R&B Material Used	Amount Used	Expense
10/21/2014	Mowed grass (5.2 miles) (From CR 152 to dead end)			
10/23/2014	Mowed grass (1 mile)			
10/31/2014	Put up COUNTY road name sign @ CR 155A	County Road Name Sign	2 each	\$13.90

Daily Work History & Materials Used
(By Location)

Period: 10/1/2014 - 10/31/2014
Work: All categories and types

All Assignments
Caldwell County

Work done in Area: Precinct 2

CR 151 SANDY FORK RD

Date	Work Done	R&B Material Used	Amount Used	Expense
			Location Total =	\$13.90

CR 152 CHALK RD

Date	Work Done	R&B Material Used	Amount Used	Expense
10/21/2014	Mowed grass (4 miles)			

CR 153A BIG RANCH RD

Date	Work Done	R&B Material Used	Amount Used	Expense
10/21/2014	Mowed grass (0.3 miles)			

CR 153 SANDY RANCH RD

Date	Work Done	R&B Material Used	Amount Used	Expense
10/21/2014	Mowed grass (0.2 miles)			

CR 154 SILVERMINE RD (Delhi)

Date	Work Done	R&B Material Used	Amount Used	Expense
10/20/2014	Mowed grass (3 miles)			

CR 155A BLUE JAY RD

Date	Work Done	R&B Material Used	Amount Used	Expense
10/23/2014	Mowed grass (1.4 miles)			

CR 155 CARDINAL RD

Date	Work Done	R&B Material Used	Amount Used	Expense
10/23/2014	Mowed grass (1 mile)			

Daily Work History & Materials Used
(By Location)

Period: 10/1/2014 - 10/31/2014
Work: All categories and types

All Assignments
Caldwell County

Work done in Area: Precinct 2

CR 155B ORIOLE LOOP

Date	Work Done	R&B Material Used	Amount Used	Expense
10/23/2014	Mowed grass (0.7 miles)			

CR 156 WOLF RUN RD

Date	Work Done	R&B Material Used	Amount Used	Expense
10/6/2014	Applied oil for dust control (1.5 miles) (SS1 - 200 G.)	SS1 Slow Set Emulsion-Pick up	200 gallon(s)	\$456.00
10/7/2014	Applied oil for dust control (1.5 miles) (SS1 - 200 G.)	SS1 Slow Set Emulsion-Pick up	200 gallon(s)	\$456.00
10/23/2014	Mowed grass (1.2 miles)			

Location Total = \$912.00

CR 157 DELHI LOOP

Date	Work Done	R&B Material Used	Amount Used	Expense
10/23/2014	Mowed grass (0.2 miles)			

CR 158 TAYLORSVILLE RD (E.FM 20 to FM 86)

Date	Work Done	R&B Material Used	Amount Used	Expense
10/1/2014	Patched road surface (2.5 miles) (Type D - 5 T.)	Type D Cold Mix	5 ton(s)	\$325.00
10/2/2014	Patched road surface (1 mile) (Type D - 1.5 T.)	Type D Cold Mix	1.5 ton(s)	\$97.50
10/31/2014	Put up COUNTY road name sign @ CR 159	County Road Name Sign	2 each	\$13.90

Location Total = \$436.40

CR 159 PETTYTOWN RD (E.FM 20 to FM 86)

Date	Work Done	R&B Material Used	Amount Used	Expense
10/10/2014	Applied oil for dust control (2 miles) (SS1 - 200 G.)	SS1 Slow Set Emulsion-Pick up	200 gallon(s)	\$456.00
10/17/2014	Applied oil for dust control (6 miles) (SS1 - 400 G.)	SS1 Slow Set Emulsion-Pick up	400 gallon(s)	\$912.00

Location Total = \$1,368.00

CR 159 PETTYTOWN RD (FM 86 to County Line)

Date	Work Done	R&B Material Used	Amount Used	Expense
------	-----------	-------------------	-------------	---------

Daily Work History & Materials Used
(By Location)

Period: 10/1/2014 - 10/31/2014
Work: All categories and types

All Assignments
Caldwell County

Work done in Area: Precinct 2

CR 159 PETTYTOWN RD (FM 86 to County Line)

Date	Work Done	R&B Material Used	Amount Used	Expense
10/2/2014	Hauled off brush (1.5 miles)			
10/7/2014	Spot bladed washes (2 miles)			

CR 160 OLD COLONY LINE RD (E.FM 20 to FM 713)

Date	Work Done	R&B Material Used	Amount Used	Expense
10/20/2014	Bladed surface; added base (0.5 miles) (3/4" base - 192 T.)	3/4" base to dust	192 ton(s)	\$2,778.24
10/21/2014	Bladed surface; added base (1 mile) (Spot bladed - 3/4" Base - 216 T.)	3/4" base to dust	216 ton(s)	\$3,125.52
10/22/2014	Bladed surface (2 miles)			
10/24/2014	Bladed surface; added base (1 mile) (3/4" base - 120 T.)	3/4" base to dust	120 ton(s)	\$1,736.40
10/30/2014	Cleaned out or fixed road culvert			
10/31/2014	Put up PRIVATE road name sign @ Smitty Ln.	County Road Name Sign	1 each	\$6.95
		County Road Name Sign	1 each	\$6.95
			Location Total =	\$7,654.06

CR 160 OLD COLONY LINE RD (FM 86 to FM 3158)

Date	Work Done	R&B Material Used	Amount Used	Expense
10/27/2014	Bladed surface (1.8 miles)			
10/28/2014	Patched road surface (0.5 miles) (Type D - 3 T.)	Type D Cold Mix	3 ton(s)	\$195.00
10/29/2014	Patched road surface (0.5 miles) (Type D - 4 T.)	Type D Cold Mix	4 ton(s)	\$260.00
10/30/2014	Patched road surface (1 mile) (Type D - 4 T.)	Type D Cold Mix	4 ton(s)	\$260.00
	Applied oil for dust control (3 miles) (SS1 - 200 G.)	SS1 Slow Set Emulsion-Pick up	200 gallon(s)	\$456.00
10/31/2014	Put up COUNTY road name sign @ FM 3158	County Road Name Sign	2 each	\$13.90
			Location Total =	\$1,184.90

CR 161 SAND HILL RD

Date	Work Done	R&B Material Used	Amount Used	Expense
10/27/2014	Patched road surface (1.5 miles) (Type D - 4 T.)	Type D Cold Mix	4 ton(s)	\$260.00

Daily Work History & Materials Used
(By Location)

Period: 10/1/2014 - 10/31/2014
Work: All categories and types

All Assignments
Caldwell County

Work done in Area: Precinct 2

CR 161 SAND HILL RD

Date	Work Done	R&B Material Used	Amount Used	Expense
10/28/2014	Patched road surface (0.5 miles) (Type D - 1 T.)	Type D Cold Mix	1 ton(s)	\$65.00
			Location Total =	\$325.00

CR 194 CLEAR FORK RD (FM 86 - FM 1322)

Date	Work Done	R&B Material Used	Amount Used	Expense
10/7/2014	Mowed grass (1 mile)			

CR 202 OLD MCMAHAN RD (FM 713 to dead end)

Date	Work Done	R&B Material Used	Amount Used	Expense
10/3/2014	Cleared debris or fallen tree			
10/7/2014	Hauled off brush (0.2 miles)			

CR 207 BURDETTE WELLS RD (From Bridge to FM 1322)

Date	Work Done	R&B Material Used	Amount Used	Expense
10/6/2014	Mowed grass (1.4 miles)			
10/15/2014	Patched road surface (1.4 miles) (Type D - 1 T.)	Type D Cold Mix	1 ton(s)	\$65.00
			Location Total =	\$65.00

CR 243 POWELL RD

Date	Work Done	R&B Material Used	Amount Used	Expense
10/15/2014	Mowed grass (0.8 miles)			

CR 246 BURNS RD

Date	Work Done	R&B Material Used	Amount Used	Expense
10/14/2014	Mowed grass (0.4 miles)			

CR 247 ST. JOSEPH ST

Date	Work Done	R&B Material Used	Amount Used	Expense
10/9/2014	Mowed grass (1.3 miles)			

Daily Work History & Materials Used
(By Location)

Period: 10/1/2014 - 10/31/2014
Work: All categories and types

All Assignments
Caldwell County

Work done in Area: Precinct 2

CR 247 ST. JOSEPH ST

Date	Work Done	R&B Material Used	Amount Used	Expense
------	-----------	-------------------	-------------	---------

CR 248 TREETOP LANE

Date	Work Done	R&B Material Used	Amount Used	Expense
------	-----------	-------------------	-------------	---------

10/10/2014	Mowed grass (1.6 miles)			
10/13/2014	Patched road surface (0.4 miles) (Type D - 4 T.)	Type D Cold Mix	4 ton(s)	\$260.00
			Location Total =	\$260.00

CR 249 SANDY PINE RD

Date	Work Done	R&B Material Used	Amount Used	Expense
------	-----------	-------------------	-------------	---------

10/14/2014	Mowed grass (0.6 miles)			
10/23/2014	Bladed surface (0.6 miles)			

CR 250 OAKVIEW RD

Date	Work Done	R&B Material Used	Amount Used	Expense
------	-----------	-------------------	-------------	---------

10/14/2014	Mowed grass (0.2 miles)			
------------	-------------------------	--	--	--

CR 251 TURKEY HOLLOW RD

Date	Work Done	R&B Material Used	Amount Used	Expense
------	-----------	-------------------	-------------	---------

10/14/2014	Mowed grass (1.5 miles)			
10/23/2014	Bladed surface (0.5 miles) (Spot bladed)			

CR 252 SPANISH OAK RD

Date	Work Done	R&B Material Used	Amount Used	Expense
------	-----------	-------------------	-------------	---------

10/2/2014	Applied oil for dust control (0.8 miles) (SS1 - 200 G.)	SS1 Slow Set Emulsion-Pick up	200 gallon(s)	\$456.00
			Location Total =	\$456.00

CR 278 MUSTANG ST

Date	Work Done	R&B Material Used	Amount Used	Expense
------	-----------	-------------------	-------------	---------

Daily Work History & Materials Used
(By Location)

Period: 10/1/2014 - 10/31/2014
Work: All categories and types

All Assignments
Caldwell County

Work done in Area: Precinct 2				
--------------------------------------	--	--	--	--

CR 278 MUSTANG ST		R&B Material Used	Amount Used	Expense
Date	Work Done			
10/9/2014	Mowed grass (0.5 miles)			

CR 279 RIVER ST		R&B Material Used	Amount Used	Expense
Date	Work Done			
10/9/2014	Mowed grass (0.2 miles)			

CR 280 SCHOOL ST		R&B Material Used	Amount Used	Expense
Date	Work Done			
10/9/2014	Mowed grass (0.2 miles)			

CR 281 CHURCH AVE		R&B Material Used	Amount Used	Expense
Date	Work Done			
10/9/2014	Mowed grass (0.2 miles)			

CR 282 WATER ST		R&B Material Used	Amount Used	Expense
Date	Work Done			
10/9/2014	Mowed grass (0.4 miles)			

CR 283 MARKET ST		R&B Material Used	Amount Used	Expense
Date	Work Done			
10/9/2014	Mowed grass (0.1 miles)			

CR 284 MILL ST.		R&B Material Used	Amount Used	Expense
Date	Work Done			
10/9/2014	Mowed grass (0.2 miles)			

Daily Work History & Materials Used
(By Location)

Period: 10/1/2014 - 10/31/2014
Work: All categories and types

All Assignments
Caldwell County

Work done in Area: Precinct 2

CR 299 YELLOWSTONE RD.

Date	Work Done	R&B Material Used	Amount Used	Expense
10/13/2014	Mowed grass (0.1 miles)			

CR 301 LONG HORN RD

Date	Work Done	R&B Material Used	Amount Used	Expense
10/17/2014	Mowed grass (1.5 miles)			
10/27/2014	Bladed surface (1.5 miles)			
10/28/2014	Bladed surface; added base (0.4 miles) (3/4" base - 96 T.)	3/4" base to dust	96 ton(s)	\$1,389.12
10/29/2014	Bladed surface; added base (0.3 miles) (3/4" B - 144 T.)	3/4" base to dust	144 ton(s)	\$2,083.68
10/30/2014	Bladed surface; added base (0.2 miles) (3/4" base - 144 T.)	3/4" base to dust	144 ton(s)	\$2,083.68
			Location Total =	\$5,556.48

CR 302 MCNEIL RD

Date	Work Done	R&B Material Used	Amount Used	Expense
10/10/2014	Mowed grass (0.9 miles)			
10/21/2014	Bladed surface (0.6 miles)			

CR 305 REED CREEK DR

Date	Work Done	R&B Material Used	Amount Used	Expense
10/21/2014	Mowed grass (1.8 miles)			

CR 306 CLEAR CREEK RD

Date	Work Done	R&B Material Used	Amount Used	Expense
10/3/2014	Cleared debris or fallen tree			

CR 307 CLUB DR

Date	Work Done	R&B Material Used	Amount Used	Expense
------	-----------	-------------------	-------------	---------

Daily Work History & Materials Used
(By Location)

Period: 10/1/2014 - 10/31/2014
Work: All categories and types

All Assignments
Caldwell County

Work done in Area: Precinct 2

CR 307 CLUB DR

Date	Work Done	R&B Material Used	Amount Used	Expense
10/8/2014	Mowed grass (0.5 miles)			

CR 308A COASTAL LN.

Date	Work Done	R&B Material Used	Amount Used	Expense
10/8/2014	Mowed grass (0.9 miles)			

CR 308 WOODY HOLLOW RD

Date	Work Done	R&B Material Used	Amount Used	Expense
10/8/2014	Mowed grass (0.7 miles)			

CR 309 BRIDLE PATH RD

Date	Work Done	R&B Material Used	Amount Used	Expense
10/13/2014	Mowed grass (0.5 miles)			

CR 309A WISTFUL VISTA

Date	Work Done	R&B Material Used	Amount Used	Expense
10/13/2014	Mowed grass (0.2 miles)			

CR 311 VERBENA TR

Date	Work Done	R&B Material Used	Amount Used	Expense
10/17/2014	Mowed grass (0.3 miles)			
10/31/2014	Bladed surface (0.3 miles)			

CR 314 PRIMROSE LN

Date	Work Done	R&B Material Used	Amount Used	Expense
10/17/2014	Mowed grass (0.9 miles)			
10/31/2014	Bladed surface (0.9 miles)			

Daily Work History & Materials Used
(By Location)

Period: 10/1/2014 - 10/31/2014
Work: All categories and types

All Assignments
Caldwell County

Work done in Area: Precinct 2

CR 314 PRIMROSE LN

Date	Work Done	R&B Material Used	Amount Used	Expense
------	-----------	-------------------	-------------	---------

Material Total for this Area = \$38,847.82

Daily Work History & Materials Used
(By Location)

Period: 10/1/2014 - 10/31/2014
Work: All categories and types

All Assignments
Caldwell County

Work done in Area: Precinct 3

CR 40 GLOVER LN

Date	Work Done	R&B Material Used	Amount Used	Expense
10/1/2014	Applied oil for dust control (0.2 miles) (SS1 - 25 G.)	SS1 Slow Set Emulsion-Pick up	25 gallon(s)	\$57.00
			Location Total =	\$57.00

CR 66 HUMPHREY CT

Date	Work Done	R&B Material Used	Amount Used	Expense
10/21/2014	Patched road surface (0.1 miles) (Type D - 2 T.)	Type D Cold Mix	2 ton(s)	\$130.00
			Location Total =	\$130.00

CR 101 OLD BASTROP RD (Hwy. 80 to River)

Date	Work Done	R&B Material Used	Amount Used	Expense
10/2/2014	Patched road surface (1 mile) (Type D - 1 T.)	Type D Cold Mix	1 ton(s)	\$65.00
			Location Total =	\$65.00

CR 102 MARTINDALE RD

Date	Work Done	R&B Material Used	Amount Used	Expense
10/2/2014	Patched road surface (1 mile) (Type D - 1 T.)	Type D Cold Mix	1 ton(s)	\$65.00
10/3/2014	Cleared debris or fallen tree			
			Location Total =	\$65.00

CR 103 S.E. RIVER RD

Date	Work Done	R&B Material Used	Amount Used	Expense
10/2/2014	Patched road surface (0.8 miles) (Type D - 1 T.)	Type D Cold Mix	1 ton(s)	\$65.00
			Location Total =	\$65.00

CR 107 DICKERSON RD

Date	Work Done	R&B Material Used	Amount Used	Expense
10/9/2014	Spot bladed washes (1 mile)			

CR 111 POLITICAL RD (Hwy. 80 to W FM 20)

Date	Work Done	R&B Material Used	Amount Used	Expense
10/7/2014	Cleaned ditches (0.1 miles)			

Daily Work History & Materials Used
(By Location)

Period: 10/1/2014 - 10/31/2014
Work: All categories and types

All Assignments
Caldwell County

Work done in Area: Precinct 3

CR 111 POLITICAL RD (Hwy. 80 to W FM 20)

Date	Work Done	R&B Material Used	Amount Used	Expense
10/8/2014	Spot bladed washes (1.5 miles)			

CR 111 POLITICAL RD (Dead End)

Date	Work Done	R&B Material Used	Amount Used	Expense
10/9/2014	Spot bladed washes (0.1 miles)			

CR 112 CALLIHAN RD (From W.FM 20 to CR 115)

Date	Work Done	R&B Material Used	Amount Used	Expense
10/2/2014	Patched road surface (1 mile) (Type D - 3 T.)	Type D Cold Mix	3 ton(s)	\$195.00
10/7/2014	Patched road surface (1 mile) (Type D - 2 T.)	Type D Cold Mix	2 ton(s)	\$130.00
10/8/2014	Mowed grass (1 mile) (W.FM 20 to CR 115)			
			Location Total =	\$325.00

CR 126 ACORN RD

Date	Work Done	R&B Material Used	Amount Used	Expense
10/7/2014	Mowed grass (1.4 miles)			

CR 177 WILLIAMSON RD (Hwy. 183 - Hwy. 21)

Date	Work Done	R&B Material Used	Amount Used	Expense
10/29/2014	Applied oil for dust control (2 miles) (SS1 - 100 G.)	SS1 Slow Set Emulsion-Pick up	100 gallon(s)	\$228.00
			Location Total =	\$228.00

CR 190 SKYLINE RD

Date	Work Done	R&B Material Used	Amount Used	Expense
10/29/2014	Patched road surface (1.4 miles) (Type D - 1 T.)	Type D Cold Mix	1 ton(s)	\$65.00
			Location Total =	\$65.00

CR 192 CALDER RD

Date	Work Done	R&B Material Used	Amount Used	Expense
10/29/2014	Patched road surface (1.6 miles) (Type D - 1 T.)	Type D Cold Mix	1 ton(s)	\$65.00

Daily Work History & Materials Used
(By Location)

Period: 10/1/2014 - 10/31/2014
Work: All categories and types

All Assignments
Caldwell County

Work done in Area: Precinct 3

CR 192 CALDER RD

Date	Work Done	R&B Material Used	Amount Used	Expense
			Location Total =	\$65.00

CR 193 AVIS RD

Date	Work Done	R&B Material Used	Amount Used	Expense
10/29/2014	Patched road surface (1.1 miles) (Type D - 1 T.)	Type D Cold Mix	1 ton(s)	\$65.00
			Location Total =	\$65.00

CR 225 ELM CREEK RD

Date	Work Done	R&B Material Used	Amount Used	Expense
10/15/2014	Bladed surface (1.1 miles)			

CR 227B FRIAR CT

Date	Work Done	R&B Material Used	Amount Used	Expense
10/15/2014	Bladed surface (0.3 miles)			
10/24/2014	Bladed surface; added base (0.1 miles) (3/4" base - 24 T.)	3/4" base to dust	24 ton(s)	\$347.28
			Location Total =	\$347.28

CR 227 ROCKY RD

Date	Work Done	R&B Material Used	Amount Used	Expense
10/15/2014	Bladed surface (1.1 miles)			
10/16/2014	Bladed surface; added base (0.1 miles) (3/4" base - 92 T.)	3/4" base to dust	92 ton(s)	\$1,331.24
10/23/2014	Bladed surface; added base (0.2 miles) (3/4" base - 48 T.)	3/4" base to dust	48 ton(s)	\$694.56
10/24/2014	Bladed surface; added base (0.1 miles) (3/4" base - 24 T.)	3/4" base to dust	24 ton(s)	\$347.28
10/27/2014	Bladed surface; added base (0.1 miles) (3/4" base - 12 T.)	3/4" base to dust	12 ton(s)	\$173.64
			Location Total =	\$2,546.72

Daily Work History & Materials Used
(By Location)

Period: 10/1/2014 - 10/31/2014
Work: All categories and types

All Assignments
Caldwell County

Work done in Area: Precinct 3

CR 229 MISTY LN (CR 230 to CR 228)

Date	Work Done	R&B Material Used	Amount Used	Expense
10/21/2014	Applied oil for dust control (1 mile) (SS1 - 100 G.)	SS1 Slow Set Emulsion-Pick up	100 gallon(s)	\$228.00
10/27/2014	Bladed surface; added base (0.1 miles) (3/4" base - 48 T.)	3/4" base to dust	48 ton(s)	\$694.56
10/28/2014	Bladed surface; added base (0.1 miles) (3/4" base - 36 T.)	3/4" base to dust	36 ton(s)	\$520.92
10/29/2014	Bladed surface; added base (0.2 miles) (3/4" base - 120 T.)	3/4" base to dust	120 ton(s)	\$1,736.40
			Location Total =	\$3,179.88

CR 229 MISTY LN. (CR 228 to Hwy. 21)

Date	Work Done	R&B Material Used	Amount Used	Expense
10/21/2014	Applied oil for dust control (0.5 miles) (SS1 - 100 G.)	SS1 Slow Set Emulsion-Pick up	100 gallon(s)	\$228.00
10/28/2014	Bladed surface; added base (0.1 miles) (3/4" base - 12 T.)	3/4" base to dust	12 ton(s)	\$173.64
			Location Total =	\$401.64

CR 238 VALLEY WAY DR

Date	Work Done	R&B Material Used	Amount Used	Expense
10/30/2014	Bladed surface; added base (0.1 miles) (3/4" base - 120 T.)	3/4" base to dust	120 ton(s)	\$1,736.40
			Location Total =	\$1,736.40

CR 238 WILLIAM PETTUS RD

Date	Work Done	R&B Material Used	Amount Used	Expense
10/1/2014	Applied oil for dust control (0.6 miles) (SS1 - 200 G.)	SS1 Slow Set Emulsion-Pick up	200 gallon(s)	\$456.00
	Applied oil for dust control (0.6 miles) (SS1 - 175 G.)	SS1 Slow Set Emulsion-Pick up	175 gallon(s)	\$399.00
10/8/2014	Applied oil for dust control (0.5 miles) (SS1 - 125 G.)	SS1 Slow Set Emulsion-Pick up	125 gallon(s)	\$285.00
			Location Total =	\$1,140.00

Daily Work History & Materials Used
(By Location)

Period: 10/1/2014 - 10/31/2014
Work: All categories and types

All Assignments
Caldwell County

Work done in Area: Precinct 3

CR 244 SPOKE HOLLOW RD

Date	Work Done	R&B Material Used	Amount Used	Expense
10/8/2014	Spot bladed washes (0.5 miles) (Off CR 111)			
10/29/2014	Bladed surface; added base (0.1 miles) (3/4" base - 12 T.)	3/4" base to dust	12 ton(s)	\$173.64
			Location Total =	\$173.64

CR 245 SEALS CREEK RD

Date	Work Done	R&B Material Used	Amount Used	Expense
10/3/2014	Cleared debris or fallen tree			
10/8/2014	Spot bladed washes (1 mile)			
10/9/2014	Spot bladed washes (0.2 miles)			

CR 258 CROSSROADS DR

Date	Work Done	R&B Material Used	Amount Used	Expense
10/29/2014	Patched road surface (0.6 miles) (Type D - .50 T.)	Type D Cold Mix	0.5 ton(s)	\$32.50
			Location Total =	\$32.50

Material Total for this Area = \$10,688.06

Daily Work History & Materials Used
(By Location)

Period: 10/1/2014 - 10/31/2014
Work: All categories and types

All Assignments
Caldwell County

Work done in Area: Precinct 4

CR 76 MUSTANG MEADOW RUN

Date	Work Done	R&B Material Used	Amount Used	Expense
10/29/2014	Patched road surface (0.4 miles) (Type D - 1 T.)	Type D Cold Mix	1 ton(s)	\$65.00
			Location Total =	\$65.00

CR 86 CRICKET HOLLOW RD

Date	Work Done	R&B Material Used	Amount Used	Expense
10/31/2014	Applied oil for dust control (0.5 miles) (SS1 - 50 G.)	SS1 Slow Set Emulsion-Pick up	50 gallon(s)	\$114.00
			Location Total =	\$114.00

CR 164 TUMBLEWEED TR

Date	Work Done	R&B Material Used	Amount Used	Expense
10/29/2014	Bladed surface (3.1 miles)			

CR 166 TRACK RD

Date	Work Done	R&B Material Used	Amount Used	Expense
10/31/2014	Put up COUNTY road name sign @ E FM 20	County Road Name Sign	2 each	\$13.90
			Location Total =	\$13.90

CR 167 CHAMBERLIN RD

Date	Work Done	R&B Material Used	Amount Used	Expense
10/7/2014	Trimmed brush or trees (1 mile)			
10/9/2014	Repaired bridge approaches (Type A - 24 T., Type D - 6 T.)	Type A Black Base Type D Cold Mix	24 ton(s) 6 ton(s)	\$1,512.00 \$390.00
			Location Total =	\$1,902.00

CR 170 CROOKED RD

Date	Work Done	R&B Material Used	Amount Used	Expense
10/1/2014	Picked up trash or garbage (2.6 miles)			
10/27/2014	Bladed surface; added base (2.6 miles) (3/4" b. - 96 T.)	3/4" base to dust	96 ton(s)	\$1,389.12
			Location Total =	\$1,389.12

Daily Work History & Materials Used
(By Location)

Period: 10/1/2014 - 10/31/2014
Work: All categories and types

All Assignments
Caldwell County

Work done in Area: Precinct 4

CR 171 SEMINOLE TR

Date	Work Done	R&B Material Used	Amount Used	Expense
10/21/2014	Bladed surface (1.5 miles)			

CR 172A COUNTY LINE RD

Date	Work Done	R&B Material Used	Amount Used	Expense
10/1/2014	Picked up trash or garbage (1.5 miles)			

CR 172 COUNTY LINE RD

Date	Work Done	R&B Material Used	Amount Used	Expense
10/1/2014	Picked up trash or garbage (1.6 miles)			
10/14/2014	Put up 'Speed Limit' sign Installed 30 mph sign	#30901 - 10' Green U-Channel Post	1 each	\$19.59
		#R2-1-30 - Speed Limit 30 - (18x24)	1 each	\$23.25
			Location Total =	\$42.84

CR 175 TOMAHAWK TR

Date	Work Done	R&B Material Used	Amount Used	Expense
10/16/2014	Bladed surface (2 miles)			

CR 176 OLD LOCKHART RD (CR 179 to CR 177)

Date	Work Done	R&B Material Used	Amount Used	Expense
10/31/2014	Put up COUNTY road name sign @ CR 179	County Maint. Ends (24x18)	2 each	\$47.00
			Location Total =	\$47.00

CR 177 WILLIAMSON RD (FM 1854 to CR 176)

Date	Work Done	R&B Material Used	Amount Used	Expense
10/14/2014	Bladed surface (2 miles)			
10/15/2014	Bladed surface; added base (1.5 miles) (3/4" base - 192 T.)	3/4" base to dust	192 ton(s)	\$2,778.24
10/29/2014	Applied oil for dust control (2 miles) (SS1 - 200 G.)	SS1 Slow Set Emulsion-Pick up	200 gallon(s)	\$456.00
			Location Total =	\$3,234.24

Daily Work History & Materials Used
(By Location)

Period: 10/1/2014 - 10/31/2014
Work: All categories and types

All Assignments
Caldwell County

Work done in Area: Precinct 4

CR 178 HOMANN RD

Date	Work Done	R&B Material Used	Amount Used	Expense
10/6/2014	Bladed surface (1 mile) (Spot bladed)			
10/21/2014	Bladed surface (2 miles)			
10/29/2014	Applied oil for dust control (1.5 miles) (SS1 - 100 G.)	SS1 Slow Set Emulsion-Pick up	100 gallon(s)	\$228.00
10/30/2014	Applied oil for dust control (2 miles) (SS1 - 200 G.)	SS1 Slow Set Emulsion-Pick up	200 gallon(s)	\$456.00
			Location Total =	\$684.00

CR 179 BARTH RD (FM 672 to FM 1185)

Date	Work Done	R&B Material Used	Amount Used	Expense
10/6/2014	Bladed surface (1 mile) (Spot bladed)			
10/20/2014	Applied oil for dust control (4 miles) (SS1 - 400 G.)			
10/28/2014	Bladed surface (3.1 miles)			

CR 179 HOMANNVILLE TR (FM 1185 to Hwy. 183)

Date	Work Done	R&B Material Used	Amount Used	Expense
10/2/2014	Applied oil for dust control (2 miles) (SS1 - 200 G.)	SS1 Slow Set Emulsion-Pick up	200 gallon(s)	\$456.00
10/6/2014	Applied oil for dust control (4 miles) (SS1 - 400 G.)	SS1 Slow Set Emulsion-Pick up	400 gallon(s)	\$912.00
10/14/2014	Bladed surface (3.8 miles)			
	Bladed surface (2 miles)			
			Location Total =	\$1,368.00

CR 180 LIBERTY LN

Date	Work Done	R&B Material Used	Amount Used	Expense
10/31/2014	Applied oil for dust control (1 mile) (SS1 - 150 G.)	SS1 Slow Set Emulsion-Pick up	150 gallon(s)	\$342.00
			Location Total =	\$342.00

CR 182 DRY CREEK RD (FM 672 to Gravel)

Date	Work Done	R&B Material Used	Amount Used	Expense
10/13/2014	Installed "No Dumping" signs	"No Dumping" (24x24)	2 each	\$62.00
		#30901 - 10' Green U-Channel Post	2 each	\$39.18
10/14/2014	Installed "No Dumping" signs			

Daily Work History & Materials Used
(By Location)

Period: 10/1/2014 - 10/31/2014
Work: All categories and types

All Assignments
Caldwell County

Work done in Area: Precinct 4

CR 182 DRY CREEK RD (FM 672 to Gravel)

Date	Work Done	R&B Material Used	Amount Used	Expense
			Location Total =	\$101.18

CR 183 OLD LYTTON SPRINGS RD

Date	Work Done	R&B Material Used	Amount Used	Expense
10/2/2014	Repaired bridge approaches (Type D - .50 T.)	Type D Cold Mix	0.5 ton(s)	\$32.50
			Location Total =	\$32.50

CR 185 WITTER RD (From Stoney Daile to FM 672)

Date	Work Done	R&B Material Used	Amount Used	Expense
10/31/2014	Bladed surface; added base (0.5 miles) (3/4" Base - 264 T.)	3/4" base to dust	264 ton(s)	\$3,820.08
			Location Total =	\$3,820.08

CR 186 OLD KELLEY RD (From C/L to bridge)

Date	Work Done	R&B Material Used	Amount Used	Expense
10/3/2014	Cleared debris or fallen tree			

CR 189 THOMPSON RD

Date	Work Done	R&B Material Used	Amount Used	Expense
10/31/2014	Applied oil for dust control (1.5 miles) (SS1 - 200 G.)	SS1 Slow Set Emulsion-Pick up	200 gallon(s)	\$456.00
			Location Total =	\$456.00

CR 256 CAT BRANCH RD

Date	Work Done	R&B Material Used	Amount Used	Expense
10/30/2014	Repaired Washout (Type A - 24 T.)	Type A Black Base	24 ton(s)	\$1,512.00
			Location Total =	\$1,512.00

CR 293 CLENDENNEN LN

Date	Work Done	R&B Material Used	Amount Used	Expense
10/1/2014	Picked up trash or garbage (0.2 miles)			

Daily Work History & Materials Used
(By Location)

Period: 10/1/2014 - 10/31/2014
Work: All categories and types

All Assignments
Caldwell County

Work done in Area: Precinct 4

CR 294 DALE LN

Date	Work Done	R&B Material Used	Amount Used	Expense
10/8/2014	Trimmed brush or trees (1 mile)			
10/9/2014	Trimmed brush or trees (1 mile)			
10/10/2014	Trimmed brush or trees (1 mile)			

CR 400 OAK TRAIL DR

Date	Work Done	R&B Material Used	Amount Used	Expense
10/17/2014	Bladed surface; added base (0.8 miles) (3/4" b - 36 T.; Type A - 12 T.)	3/4" base to dust Type A Black Base	36 ton(s) 12 ton(s)	\$520.92 \$756.00
10/20/2014	Applied oil for dust control (1.5 miles) (SS1 - 200 G.)	SS1 Slow Set Emulsion-Pick up	200 gallon(s)	\$456.00
10/30/2014	Applied oil for dust control (1.5 miles) (SS1 - 200 G.)	SS1 Slow Set Emulsion-Pick up	200 gallon(s)	\$456.00
			Location Total =	\$2,188.92

Material Total for this Area = \$17,312.78

Daily Work History & Materials Used
(By Location)

Period: 10/1/2014 - 10/31/2014
Work: All categories and types

All Assignments
Caldwell County

Work done in Area: Pcts 1 & 2

CR 114 MINERAL SPRINGS RD (Hwy. 183 to FM 671)

Date	Work Done	R&B Material Used	Amount Used	Expense
10/7/2014	Mowed grass (1.4 miles)			

CR 198 FOX LN

Date	Work Done	R&B Material Used	Amount Used	Expense
10/3/2014	Cleared debris or fallen tree Cleared debris or fallen tree			
10/14/2014	Bladed surface (0.2 miles)			
10/24/2014	Patched road surface (3 miles) (Type D - 8 T.)	Type D Cold Mix	8 ton(s)	\$520.00
10/27/2014	Patched road surface (1 mile) (Type D - 5 T.)	Type D Cold Mix	5 ton(s)	\$325.00
10/28/2014	Patched road surface (0.3 miles) (Type D - 8 T.)	Type D Cold Mix	8 ton(s)	\$520.00
10/29/2014	Patched road surface (0.5 miles) (Type D - 8 T.)	Type D Cold Mix	8 ton(s)	\$520.00
			Location Total =	\$1,885.00

CR 207 BURDETTE WELLS RD (From S. US HWY 183 to Bridge)

Date	Work Done	R&B Material Used	Amount Used	Expense
10/7/2014	Mowed grass (1.5 miles)			
10/15/2014	Patched road surface (1.5 miles) (Type D - 3 T.)	Type D Cold Mix	3 ton(s)	\$195.00
			Location Total =	\$195.00

Material Total for this Area = \$2,080.00

Daily Work History & Materials Used
(By Location)

Period: 10/1/2014 - 10/31/2014
Work: All categories and types

All Assignments
Caldwell County

Work done in Area: Pcts 1 & 3

CR 109 BLACK ANKLE RD (From W. FM 20 to CR 107)

Date	Work Done	R&B Material Used	Amount Used	Expense
10/7/2014	Repair base failure	Type A Black Base	12 ton(s)	\$756.00
			Location Total =	\$756.00

CR 109B MARTINDALE LAKE RD

Date	Work Done	R&B Material Used	Amount Used	Expense
10/1/2014	Applied oil for dust control (0.5 miles) (SS1 - 125 G.)	SS1 Slow Set Emulsion-Pick up	125 gallon(s)	\$285.00
10/8/2014	Applied oil for dust control (0.3 miles) (SS1 - 75 G.)	SS1 Slow Set Emulsion-Pick up	75 gallon(s)	\$171.00
			Location Total =	\$456.00

CR 221 ROLLING RIDGE RD (Hwy. 183 to CR 233)

Date	Work Done	R&B Material Used	Amount Used	Expense
10/24/2014	Bladed surface; added base (0.1 miles) (3/4" base - 132 T.)	3/4" base to dust	132 ton(s)	\$1,910.04
			Location Total =	\$1,910.04

CR 232 BOBWHITE RD

Date	Work Done	R&B Material Used	Amount Used	Expense
10/14/2014	Blade and repair washes (0.1 miles)			

CR 233 POLONIA RD

Date	Work Done	R&B Material Used	Amount Used	Expense
10/9/2014	Installed work signs			
10/13/2014	Excavating existing culverts	3/4" base to dust	0 ton(s)	\$0.00
10/14/2014	Excavating existing culverts			
10/15/2014	Excavating existing culverts			
10/16/2014	Excavating existing culverts			
10/17/2014	Excavating existing culverts			
10/20/2014	Excavating existing culverts			

Daily Work History & Materials Used
(By Location)

Period: 10/1/2014 - 10/31/2014

Work: All categories and types

All Assignments
Caldwell County

Work done in Area: Pcts 1 & 3

CR 233 POLONIA RD

Date	Work Done	R&B Material Used	Amount Used	Expense
10/21/2014	Installed (3) 6'x45' culverts	3/4" base to dust	216 ton(s)	\$3,125.52
		6'x45' Culvert	3 each	\$8,925.00
		Ready Mix	86 each	\$774.00
10/22/2014	Stabilized base to cover culverts	3/4" base to dust	204 ton(s)	\$2,951.88
		Ready Mix	107 each	\$963.00
10/23/2014	Stabilized base to cover culverts	3/4" base to dust	108 ton(s)	\$1,562.76
		Ready Mix	96 each	\$864.00
10/24/2014	Removed dirt;hauled to county pit			
10/27/2014	Added 73.33 T.of Slag for Rip-Rap @ Culverts	Slag	73.33 ton(s)	\$128.33
10/28/2014	Added 48.71 T. of Slag for Rip-Rap @ Culverts Bladed Type A Black Base on surface (72 T.) Installed Roadway Markers	Slag	48.71 ton(s)	\$85.24
		Type A Black Base	72 ton(s)	\$4,536.00
		#30920 - 6' Green Delineator Post	6 each	\$41.88
		#OM-3L - Left Bridge Marker	2 each	\$46.50
		#OM-3R - Right Bridge Marker	2 each	\$46.50
		30324-12A -6"x24" yellow reflector	4 each	\$19.96
		SS1 Slow Set Emulsion-Pick up	200 gallon(s)	\$456.00
10/30/2014	Cleaned & reshaped ditches			
10/31/2014	Cleaned ditches; hauled base to road surface-72 T. Put up 'Children At Play' sign ;20 mph signs	3/4" base to dust	72 ton(s)	\$1,041.84
		"Slow Children At Play" W/Symbol (18x24)	2 each	\$46.50
		#30901 - 10' Green U-Channel Post	2 each	\$39.18
		#W13-1-20 - "20 MPH" (Y/B) - (18x18)	2 each	\$28.58
			Location Total =	\$25,682.67
			Material Total for this Area =	\$28,804.71

Daily Work History & Materials Used
(By Location)

All Assignments
Caldwell County

Period: 10/1/2014 - 10/31/2014
Work: All categories and types

Work done in Area: Pcts 1 & 4

CR 185 WITTER RD (From FM 186 to Stoney Dalle)

Date	Work Done	R&B Material Used	Amount Used	Expense
10/30/2014	Bladed surface; added base (0.5 miles) (3/4" base - 84 T.)	3/4" base to dust	84 ton(s)	\$1,215.48
			Location Total =	\$1,215.48
			Material Total for this Area =	\$1,215.48

Daily Work History & Materials Used
(By Location)

Period: 10/1/2014 - 10/31/2014
Work: All categories and types

All Assignments
Caldwell County

Work done in Area: Pcts 2 & 3

CR 112 CALLIHAN RD (From CR 115 to San Marcos Hwy.)

Date	Work Done	R&B Material Used	Amount Used	Expense
10/8/2014	Hauled off brush (1 mile)			
10/9/2014	Mowed grass (2.9 miles)			

CR 113 SIERRA DR

Date	Work Done	R&B Material Used	Amount Used	Expense
10/7/2014	Mowed grass (1 mile)			

CR 114 MINERAL SPRINGS RD (FM 671 to CR 115))

Date	Work Done	R&B Material Used	Amount Used	Expense
10/7/2014	Mowed grass (3.3 miles)			

Daily Work History & Materials Used
(By Location)

Period: 10/1/2014 - 10/31/2014
Work: All categories and types

All Assignments
Caldwell County

Work done in Area: County

(location not on list)				
Date	Work Done	R&B Material Used	Amount Used	Expense
10/16/2014	Patched road surface (Type D - 4 T.)	Type D Cold Mix	4 ton(s)	\$260.00
10/17/2014	Patched road surface (Type D - .50)	Type D Cold Mix	0.5 ton(s)	\$32.50
	Patched road surface (Type D - 3 T.)	Type D Cold Mix	3 ton(s)	\$195.00
10/20/2014	Patched road surface (Type D - .50 T.)	Type D Cold Mix	0.5 ton(s)	\$32.50
	Patched road surface (Type D - 1.5 T.)	Type D Cold Mix	1.5 ton(s)	\$97.50
	Patched road surface (Type D - 2 T.)	Type D Cold Mix	2 ton(s)	\$130.00
10/21/2014	Patched road surface (Type D - 1 T.)	Type D Cold Mix	1 ton(s)	\$65.00
	Patched road surface (Type D - .5 T.)	Type D Cold Mix	0.5 ton(s)	\$32.50
			Location Total =	\$845.00
Material Total for this Area =				\$845.00
Material Total for all Areas =				\$102,504.69

Equipment Maintenance Details

Equipment: All types
 Maintenance: All categories
 Personnel: All personnel

Caldwell County
 All assignments
 10/1/2014 - 10/31/2014

District Attorney's Office

DA1 Car 2012 Chevy Impala

Date	Maintenance Category	When	Personnel
10/14/2014	Routine service	43322 miles	John Franklin
	Engine	AF1519 (1) air filter, 57502 (1) oil filter, 15W40 oil	

DA2 Pick-up 2002 Ford F150 (District Attorney)

Date	Maintenance Category	When	Personnel
10/16/2014	Routine service	239808 miles	John Franklin
	Engine	AF1615 (1), PH820 (1), 15W40 (6.5)	
10/9/2014	Repair work	238587 miles	John Franklin
	Wheels	replaced flat (LR)	

Heavy equipment

G-10 Graders - 8332 1997 Gallion 830 (SN#V03623)

Date	Maintenance Category	When	Personnel
10/15/2014	Repair work	10602 hours	Donnie Barker
	Engine	86634 (1) hose, G25165 (1) fitting, G25170 (1) fitting, 1747 (2) strap, 9091 (2) strap, G25170 (1) fitting, G25175 (1) fitting, 86634 (1) hose - NAPA	
10/14/2014	Routine service	10599 hours	Richard Martinez
	Miscellaneous	blades (2)	

G-16 Graders - 8332 2004 Cat 120-H

Date	Maintenance Category	When	Personnel
10/31/2014	Routine service	7743 hours	Donnie Barker
	Miscellaneous	GB41017 (2) blades, 1300R24 (1) double coin tire - stock	
10/20/2014	Routine service	7696 hours	Richard Martinez
	Miscellaneous	blades (2)	
10/8/2014	Routine service	7668 hours	Donnie Barker
	Engine	46689 (1) cabin filter, 15-40 (5 G.) oil - both stock	
	Engine	33640 (1) fuel filter, 46477 (1) inner air filter, 24314 (2) cabin filters, 51792 (1) oil filter, 46476 (1) outer air filter - All Parts Plus. 57720 (1) trans filter - stock, 57197 (1) hyd filter - Parts Plus, FF1186-SP (1) fuel filter - stock	
	Transmission	333-0960 (4) wear strip - stock, 128-9654 (9) wear strip, 446-1524 (4) wear strip, 8W-1749 (2) cover plate - all Holt	

Equipment Maintenance Details

Equipment: All types
 Maintenance: All categories
 Personnel: All personnel

Caldwell County
 All assignments
 10/1/2014 - 10/31/2014

Heavy equipment

G-17 Graders - 8332 2004 Cat 120-H

Date	Maintenance Category	When	Personnel
10/7/2014	Repair work	6647 hours	Donnie Barker
	Engine	10R-4429 (1) water pump - Holt Calt, hoses, clamps, orings, - Holt Cat, 25-081035 (1) drive belt, GB41017 (2) blades, 7 gal. coolant - all stock	

G-18 Graders - 8332 2004 Cat 120-H

Date	Maintenance Category	When	Personnel
10/28/2014	Routine service	8036 hours	Mike Cheatham
	Miscellaneous	GB41017 (2) cutting blades - stock	
10/17/2014	Repair work	8018 hours	Donnie Barker
	Wheels	1300R24 91) double coin tire -stock	
10/10/2014	Routine service	8000 hours	Donnie Barker
	Miscellaneous	GB41017 (2) blades - stock	

Light equipment

B1 Loader - Backhoe, Wheel - 8571 2012 John Deere 310SJ

Date	Maintenance Category	When	Personnel
10/24/2014	Repair work	1894 hours	Donnie Barker
	Miscellaneous	AT195669 (1) outrigger pad - stock/RDO	

Heavy vehicles

D-1 Truck, Dump - 8720 2009 Ford (8 yd)

Date	Maintenance Category	When	Personnel
10/14/2014	Routine service	73377 miles	Donnie Barker
	Electrical	RY-116T (1) stop light relay	
	Engine	15-40 (5 gal.) oil - stock, B-201 (1) trans filter, 33626 (1) fuel filter, 33736 (1) fuel filter, 57791 (1) oil filter, 49606 (1) air filter - all Parts Plus	

Equipment Maintenance Details

Equipment: All types
 Maintenance: All categories
 Personnel: All personnel

Caldwell County
 All assignments
 10/1/2014 - 10/31/2014

Heavy vehicles

D-10 Truck, Dump - 8722 1997 Ford (12 yd)			
Date	Maintenance Category	When	Personnel
10/8/2014	Routine service	387266 miles	Donnie Barker
	Brakes	BBHBTS3030 (1) spring brake chamber - Oreilly	
	Engine	15-40 (5 gal.) oil, 51748 (1) oil filter, 42776 (1) air filter, FF5310 (1) fuel filter, 33472 (1) fuel filter, 24071 (1) coolant filter - all stock	
D-12 Truck, Dump - 8722 2000 Volvo (12 yd)			
Date	Maintenance Category	When	Personnel
10/28/2014	Routine service		Donnie Barker
	Engine	3692815 (1) TPS Sensor - Vanguard, 33358 (2) fuel filter, 33405 (1) fuel filter - both Parts Plus	
D-15 Truck, Dump - 8720 1998 Ford (8 yd)			
Date	Maintenance Category	When	Personnel
10/6/2014	Repair work	162548 miles	Donnie Barker
	Electrical	EP-36 (1) flasher, 1157 (1) bulb - stock	
D-3 Truck, Dump - 8722 2013 International 7500 6x4 12 yd			
Date	Maintenance Category	When	Personnel
10/16/2014	Repair work	24851 miles	Richard Martinez
	Wheels	(1) mud flap	
D-44 Truck, Tractor - 8792 2008 Freightliner			
Date	Maintenance Category	When	Personnel
10/3/2014	Routine service	183530 miles	Donnie Barker
	Engine	33231 (1) fuel filter, 33628 (1) fuel filter, 42812 (1) air filter, 57213 (1) oil filter all Parts Plus, 49082 (1) cabin, 15-40 (5 gal.) oil, 49520 (1) inner air filter - all stock	

Equipment Maintenance Details

Equipment: All types
 Maintenance: All categories
 Personnel: All personnel

Caldwell County
 All assignments
 10/1/2014 - 10/31/2014

Heavy vehicles

D-45 Truck, Tractor - 8792 2008 Freightliner

Date	Maintenance Category	When	Personnel
10/23/2014	Routine service	182042 miles	Donnie Barker
	Electrical	T87 (1) marked lamp bulb - stock	
	Engine	57213 (1) oil filter, 33231 (1) fuel filter, 33628 (1) fuel filter, 42812 (1) air filter - all stock 49520 (1) inner air filter - Parts Plus; 15-40 (5 gal.) oil	
	Miscellaneous	718 - trailer tarp, - stock	
	Transmission	AR573 (1) trans relay - stock	
	Wheels	FS820 (1) tire 11R22.5 - stock, 9009P (1) bearing hub cover - stock	
10/21/2014	Repair work	181830 miles	Donnie Barker
	Engine	49082 (1) cabin filter - stock	
	Wheels	FS-820 (3) tires 11R22.5 - stock	

D-6 Truck, Dump - 8722 1997 Ford (12 yd)

Date	Maintenance Category	When	Personnel
10/30/2014	Routine service	371414 miles	Donnie Barker
	Inspection	G29766939 - state inspection	
	Wheels	40232-5 (2) reflectors, R268 (1) 11R22.5 bridgestone tire - stock	

Light vehicles

M2 Truck, Pickup - 8802 2013 Ford F250 Supercab

Date	Maintenance Category	When	Personnel
10/20/2014	Repair work	65545 miles	Donnie Barker
	Electrical	65-72 (1) battery - stock	

M3 Truck, Pickup - 8802 2013 Ford F250 Supercab

Date	Maintenance Category	When	Personnel
10/17/2014	Repair work	48534 miles	John Franklin
	Wheels	Repaired flat & re-balance (Right rear)	

MAINT-2 Truck, Pickup - 8805 2000 Chev

Date	Maintenance Category	When	Personnel
10/10/2014	Routine service	249705 miles	Donnie Barker
	Engine	15-40 (7) oil, 1060 (1) oil filter - stock	

Equipment Maintenance Details

Equipment: All types
 Maintenance: All categories
 Personnel: All personnel

Caldwell County
 All assignments
 10/1/2014 - 10/31/2014

Light vehicles

Unit -1 Truck, Pickup - 8802 2009 Chevy 2500 Silverado

Date	Maintenance Category	When	Personnel
10/7/2014	Repair work	93266 miles	Richard Martinez
	Engine	15-40 (6 qts.) oil, 7060 (1) oil filter	

Unit -2 Truck, Pickup - 8802 2009 Chev 2500 Silverado

Date	Maintenance Category	When	Personnel
10/29/2014	Repair work	151567 miles	Richard Martinez
	Wheels	mounted & balance (4) tires supplied by Unit Road, added wheel weights	
10/29/2014	Routine service	151567 miles	Richard Martinez
	Wheels	LT2657516 (4) Firestone AT - stock; (11) wheel weights	
10/10/2014	Routine service	64322 miles	Richard Martinez
	Engine	FL8205 (1) oil filter, 5-20 (7.5) oil	

Unit -3 Truck, Pickup - 8802 2009 Chevy 2500 Silverado

Date	Maintenance Category	When	Personnel
10/22/2014	Routine service	132296 miles	Donnie Barker
	Engine	4006 (1) fuel filter - stock	
10/8/2014	Repair work	131290 miles	John Franklin
	Wheels	Repaired flat (LR)	

Unit -9 Truck, Pickup - 8802 2003 Ford F250

Date	Maintenance Category	When	Personnel
10/20/2014	Repair work	353825 miles	Darius Musgrave
	Wheels	patch	
10/16/2014	Repair work	353765 miles	Donnie Barker
	Electrical	H6054 (1) head light - stock	
10/2/2014	Repair work	353152 miles	Donnie Barker
	Engine	16 - 757 (1) brake pads - Parts Plus	

UNIT-4 Truck, Pickup - 8802 1994 Ford

Date	Maintenance Category	When	Personnel
10/6/2014	Inspection sticker	378781 miles	John Franklin
	Inspection	state inspection - G36905717	

Equipment Maintenance Details

Equipment: All types
 Maintenance: All categories
 Personnel: All personnel

Caldwell County
 All assignments
 10/1/2014 - 10/31/2014

Tractors & attachments

FT-10 Tractor 1998 New Holland 5610

Date	Maintenance Category	When	Personnel
10/31/2014	Repair work		Mike Cheatham
	Engine	D8NN8575FBWG (1) thermostat, E6NN8260CH (1) hose radiator, D5NN8286F (1) hose radiator - all Ewald. Radiator Repair - Seguin, 2 gal. coolant - stock	

FT-11 Tractor 1998 New Holland 5610

Date	Maintenance Category	When	Personnel
10/20/2014	Repair work		Donnie Barker
	Transmission	83992560 (1) pilot bearing, 82010859 (1) release bearing, 82011593 (1) clutch disc, D8NN7563AB (1) clutch cover - all Boehm, P02-0227 (1) filter PTO cleaner, MC-250 (2) clamps - both Hanson, Shifter Misc - Boehm	
	Wheels	NOB16930 (1) rear tire - Tire Mart	
10/2/2014	Repair work		Mike Cheatham
	Miscellaneous	(2) 100R13-1-1/4 hoses - Hydraulic House	

FT-15 Tractor 2007 Zetor 6441.0SR

Date	Maintenance Category	When	Personnel
10/7/2014	Routine service	1833 hours	Mike Cheatham
	Miscellaneous	7555 (2) blade - bush hog, 7556 (2) blade - bush hog - all Hanson	

FT-16 Mahindra 2012 8560 M Power 4WD

Date	Maintenance Category	When	Personnel
10/29/2014	Routine service	367 hours	Donnie Barker
	Engine	LM29710 (1) bearing, 15123 (1) bearing, 15245 (1) racer, 00750616 (1) axle, seal, LW10-6 (1) bearing locknut - all Hansons, 006000790F1 (1) inner air filter, 006000789F1 (1) outer air filter - both stock	

Bldg. Maint.

BM2 Van 2012 Ford E150

Date	Maintenance Category	When	Personnel
10/8/2014	Repair work	14754 miles	John Franklin
	Wheels	flat repair	

Equipment Maintenance Details

Equipment: All types
 Maintenance: All categories
 Personnel: All personnel

Caldwell County
 All assignments
 10/1/2014 - 10/31/2014

Bldg. Maint.

BM-3 Pick-up truck, 2008 Ford F150

Date	Maintenance Category	When	Personnel
10/8/2014	Repair work		Darius Musgrave
	Electrical	MTP48H6 (1) battery	

Constable

Const4 Car 2008 Ford Crown Victoria Police Interceptor

Date	Maintenance Category	When	Personnel
10/3/2014	Repair work	85430 miles	John Franklin
	Engine	AF1032A (1) air filter, PH820 (1) oil filter, 15W40 (6.5) oil	
	Miscellaneous	31-22 (2) wiper blades	

CP1 Car 2007 Dodge Charger (Constable Prec. 1)

Date	Maintenance Category	When	Personnel
10/15/2014	Routine service	36864 miles	John Franklin
	Engine	AF5560 (1) air filter, POF4670 (1) oil filter, 15W40 (6) oil	
	Inspection	state inspection - G36905720	

Prec4 2007 Dodge Charger

Date	Maintenance Category	When	Personnel
10/8/2014	Repair work	85463 miles	Darius Musgrave
	Electrical	replaced squirell cage	

Emergency Mgmt.

EM2 Pick-up truck 2012 Chev

Date	Maintenance Category	When	Personnel
10/31/2014	Routine service	56651 miles	Richard Martinez
	Engine	ATF 8368 (1) trans filter, 41485 (11) trans fluid, MNT SP515 (2) spark plug, RPT0652 (2) ignition rail	

EM3 Ambulance 2006 Ford F350

Date	Maintenance Category	When	Personnel
10/16/2014	Repair work	167922 miles	John Franklin
	Electrical	37 (7) auto mini lamp	
	Engine	6812-6 (1) pug 46 refrigerant oil, E77VA (1) evaporator core, F-130 (1) drier A/C, M-270 (1) expansion ?, OR-25 (1) oring set, R1347 (4.25) freon	

Equipment Maintenance Details

Equipment: All types
 Maintenance: All categories
 Personnel: All personnel

Caldwell County
 All assignments
 10/1/2014 - 10/31/2014

Environmental Dept.

ED-1 Pickup Truck 2008 Chevy (Mike Bittner/Trash)

Date	Maintenance Category	When	Personnel
10/8/2014	Routine service	82263 miles	Darius Musgrave
	Engine	AF1519 (1) air filter, 2V992746 (1) Evap Emissions Clip, 57502 (1) oil filter, 15W40 (6) oil	

Extension Agent

AG1 Pick-up truck, 2009 Chevy Silverado

Date	Maintenance Category	When	Personnel
10/28/2014	Routine service	70410 miles	John Franklin
	Engine	AF1519 (1) air filter, PH48 (1) oil filter, 15W40 (6) oil	

Juvenile Probation Dept.

JP2 Van 2007 Dodge Grand Caravan (Juvenile Probation)

Date	Maintenance Category	When	Personnel
10/7/2014	Inspection sticker	62855 miles	Darius Musgrave
	Inspection	G36905719 - state inspection	

JP5 SUV 2011 Chevy Traverse (Juvenile Probation)

Date	Maintenance Category	When	Personnel
10/7/2014	Inspection sticker	5507 miles	Darius Musgrave
	Inspection	G36905718 - state inspection	

Sheriff's Dept.

10 Car 2010 Ford 4 door

Date	Maintenance Category	When	Personnel
10/21/2014	Routine service	121331 miles	Darius Musgrave
	Engine	AF1032A (1) air filte, PH2835 (1) oil filter, 15W40 (6.5) oil	

101 Pick-up 2011 Ford F250

Date	Maintenance Category	When	Personnel
10/16/2014	Repair work	50951 miles	John Franklin
	Wheels	LT285/70R17 (2) Destiny AT (Firestone), (4) wheel weights	

Equipment Maintenance Details

Equipment: All types
 Maintenance: All categories
 Personnel: All personnel

Caldwell County
 All assignments
 10/1/2014 - 10/31/2014

Sheriff's Dept.

112 Mini-Van 2012 Toyota			
Date	Maintenance Category	When	Personnel
10/30/2014	Routine service	70413 miles	Richard Martinez
	Engine	TF1 P967 (1) air filter, 15W40 (6.5) oil	
201 Car 2002 Ford Taurus 4 door			
Date	Maintenance Category	When	Personnel
10/30/2014	Repair work	118595 miles	Richard Martinez
	Fuel Tanks	A1R1 E2313M - fuel pump assy	
208 Car 2002 Ford Crown Victoria (Jail)			
Date	Maintenance Category	When	Personnel
10/15/2014	Routine service	219052 miles	John Franklin
	Engine	AF1032A (1) air filter, PH820 (1) oil filter, 15W40 (5.5) oil, SP405 (1) spark plug, ED503, (1) coil on plug coil	
	Steering	alignment	
	Wheels	ES3495 (1) outter tie rod end	
212 Pick-up 2002 Ford F250 (Jail)			
Date	Maintenance Category	When	Personnel
10/23/2014	Inspection sticker	174673 miles	Darius Musgrave
	Inspection	state inspection (1) G36905721	
302 SUV 2013 Ford Police Interceptor Utility			
Date	Maintenance Category	When	Personnel
10/17/2014	Routine service	45363 miles	John Franklin
	Engine	46935 (1) air filter, 57502 (1) oil filter, 15W40 (6) oil, 24068 (1) cabin air filter	
10/8/2014	Repair work	44570 miles	Darius Musgrave
	Electrical	SC34DU (1) battery	
10/7/2014	Repair work	44500 miles	John Franklin
	Engine	PRT6201 (2) front disc rotor, ATD1611AP (1) front disc pads, 5032 (1) Dot 4 brake fluid	
401 Interceptor 2014 Ford			
Date	Maintenance Category	When	Personnel
10/14/2014	Routine service	10778 miles	John Franklin
	Engine	46935 (1) air filter, 57902 (1) oil filter, 15W40 (6) oil	

Equipment Maintenance Details

Equipment: All types
 Maintenance: All categories
 Personnel: All personnel

Caldwell County
 All assignments
 10/1/2014 - 10/31/2014

Sheriff's Dept.

402 Sports Utility 2014 Ford Police Interceptor			
Date	Maintenance Category	When	Personnel
10/30/2014	Routine service	29456 miles	Richard Martinez
	Engine	24068 (1) cabin air filter	
10/30/2014	Routine service	29456 miles	Richard Martinez
	Engine	24068 (1) cabin air filter	
10/30/2014	Routine service	29456 miles	Richard Martinez
10/23/2014	Routine service	28456 miles	Richard Martinez
	Engine	46935 (1) air filter, 57502 (1) oil filter, 15W40 (6) oil	
10/13/2014	Repair work	27110 miles	Darius Musgrave
	Wheels	245/55R18 (1) Eagle RSA Goodyear, (2) wheel weights	
403 Interceptor 2014 Ford Utility			
Date	Maintenance Category	When	Personnel
10/24/2014	Routine service	17611 miles	Richard Martinez
	Engine	46935 (1) air filter, 57502 (1) oil filter, 15W40 (6) oil	
404 Interceptor 2014 Ford Utility			
Date	Maintenance Category	When	Personnel
10/13/2014	Routine service	23156 miles	Darius Musgrave
	Engine	46935 (1) air filter, 57502 (1) oil filter, 15W40 (6) engine oil	
405 Utility AWD 2014 Ford Police Interceptor			
Date	Maintenance Category	When	Personnel
10/31/2014	Routine service	26558 miles	Richard Martinez
	Engine	46931 (1) air filter, 57502 (1) oil filter, 15W40 (6) oil	
10/3/2014	Routine service	23459 miles	John Franklin
	Engine	24068 (1) cabin air filter, 46935 (1) air filter, 57502 (1) oil filter, 15W40 (6) oil	
	Wheels	(8) wheel weights	

Equipment Maintenance Details

Equipment: All types
 Maintenance: All categories
 Personnel: All personnel

Caldwell County
 All assignments
 10/1/2014 - 10/31/2014

Sheriff's Dept.

602 Pick-up truck 2006 Ford F150

Date	Maintenance Category	When	Personnel
10/23/2014	Repair work	159493 miles	Richard Martinez
	Electrical	26912HD (1) battery cable end, MTP65 (1) battery	

603 Pick-up 2006 Ford F250

Date	Maintenance Category	When	Personnel
10/22/2014	Routine service	128499 miles	Richard Martinez
	Engine	PAF6109 (1) air filter, PH820 (1) oil filter, 15W40 (7.5) oil	

604 Car 2006 Ford Crown Victoria 4 door

Date	Maintenance Category	When	Personnel
10/10/2014	Repair work	201734 miles	John Franklin
	Engine	airtex E2449S (1) fuel pump, G6593 (1) fuel filter, MA147 (1) mass air flow sensor	

607 Car 2006 Ford Crown Victoria 4 door

Date	Maintenance Category	When	Personnel
10/30/2014	Routine service	145474 miles	Richard Martinez
	Engine	AF1032A (1) air filter, PH820 (1) oil filter, 15W40 (6.5) oil	
10/9/2014	Repair work	143011 miles	John Franklin
	Miscellaneous	31-22 (2) wiper blades	

7 SUV 2010 Ford Escape XLT 4 door (Jail)

Date	Maintenance Category	When	Personnel
10/6/2014	Repair work	157710 miles	John Franklin
	Engine	303566AV (1) A/C condensor, H6597 (1) A/C drier, OR118 (1) A/C Oring kit, R134 (1.5) freon, 57502 (1) oil filter, 15W40 (6) oil	

8 Car 2010 Ford Sedan

Date	Maintenance Category	When	Personnel
10/31/2014	Routine service	150096 miles	Richard Martinez
	Engine	AF1032A (1) air filter, PH2835 (1) oil filter, 15W40 (6.5) oil	

Equipment Maintenance Details

Equipment: All types
 Maintenance: All categories
 Personnel: All personnel

Caldwell County
 All assignments
 10/1/2014 - 10/31/2014

Sheriff's Dept.

807 Pick-up 2008 Chevy 1500 Silverado

Date	Maintenance Category	When	Personnel
10/27/2014	Routine service	133200 miles	Richard Martinez
	Engine	AF1519 (1) air filter, PH 48 (1) oil filter, 15W40 (6) oil	

902 Car 2009 Ford Crown Victoria

Date	Maintenance Category	When	Personnel
10/30/2014	Routine service	144150 miles	Darius Musgrave
	Electrical	194 (1) license bulb,	
	Engine	DOR620-119 - radiator fan assy - warranty	
	Engine	AF1032A (1) air filter, PH2135 (1) oil filter, 15W40 (6.5) oil	
	Inspection	state inspection	

903 Car 2009 Ford Crown Victoria 4 door

Date	Maintenance Category	When	Personnel
10/29/2014	Routine service	187781 miles	Richard Martinez
	Engine	AF1032A (1) air filter, PH2835 (1) oil filter, 15W10 (6.5) oil, WW3 (1) plug patch	

CID2 SUV 2010 Ford Escape XLT

Date	Maintenance Category	When	Personnel
10/23/2014	Routine service	91969 miles	Richard Martinez
	Engine	AF1406F (1) air filter, 57502 (1) oil filter, 15W40 (6) oil	
10/2/2014	Repair work	90172 miles	John Franklin
	Engine	CL829034A (1) fuel filter neck(?)	

JM1 Pick-up truck 2002 Dodge 1500 QC-Blue

Date	Maintenance Category	When	Personnel
10/16/2014	Repair work	183301 miles	Darius Musgrave
	Electrical	9007 (1) headlight bulb	

Service Request / Work Order History
(Pending and Completed by Location)

Assignment: All
10/1/2014 - 10/31/2014
All Types of Work
All Locations in All Areas

Caldwell County

Precinct 2: County Roads

Location	WO Date	WO#	Type of Work	Caller / Source	Completed
CR 35 HACKBERRY ST	10/9 /2014	1268	Blade; Add material	Alex Molina	10/10/2014
CR 140A PASTURE RD	10/8 /2014	1267	Blade; Add material 10-14 bladed - no material added	David McCormick	10/14/2014
CR 150 KIRK CORNERS	10/17/2014	1273	Trim brush or trees	I Waktins Jr	
CR 151 SANDY FORK RD	10/28/2014	1279	Blade; Add material 11-8 - Bladed but no material added	William Reed	11/8/2014
CR 160 OLD COLONY LINE RD (E.FM 20 to FM 713)	10/16/2014	1272	Blade surface	Mary Aguirre	10/22/2014
CR 160 OLD COLONY LINE RD (FM 86 to FM 3158)	10/23/2014	1277	Patch road surface		10/30/2014
CR 301 LONG HORN RD	10/23/2014	1275	Blade; Add material	Kay Swenson	10/30/2014

Precinct 3: County Roads

Location	WO Date	WO#	Type of Work	Caller / Source	Completed
CR 106 WEST RIDGE RD	10/21/2014	1274	Patch road surface		

Precinct 4: County Roads

Location	WO Date	WO#	Type of Work	Caller / Source	Completed
CR 76 MUSTANG MEADOW RUN	10/15/2014	1271	Patch road surface	Jose Cabrera	10/29/2014
CR 164 TUMBLEWEED TR	10/23/2014	1276	Blade surface	Ledesma	10/29/2014
CR 172 COUNTY LINE RD	10/13/2014	1270	Put up 'Speed Limit' sign		10/14/2014
CR 179 BARTH RD (FM 672 to FM 1185)	10/10/2014	1269	Blade surface	Kristina Kristina Juarez	10/28/2014
	10/24/2014	1278	Blade surface	Molly (School Bus)	10/28/2014

Service Request / Work Order History
(Pending and Completed by Location)

Assignment: All
10/1/2014 - 10/31/2014
All Types of Work
All Locations in All Areas

Caldwell County

Precinct 4: County Roads

Location	WO Date	WO#	Type of Work	Caller / Source	Completed
CR 179 HOMANNVILLE TR (FM 1185 to Hwy. 183)	10/7 /2014	1266	Blade surface	Mary Dierschke	10/14/2014
CR 400 OAK TRAIL DR	10/6 /2014	1265	Blade surface	Nelle Sanchez	10/17/2014

Pcts 1 & 4: County Roads

Location	WO Date	WO#	Type of Work	Caller / Source	Completed
CR 186 OLD KELLEY RD (Bridge to CR 185)	10/30/2014	1280	Blade surface	Lowe	11/3/2014

Report to Commissioners Court **Oct. 2014** Caldwell Co. Veterans Service Officer

Overview

October followed suit with September seeing more favorable decisions and positive outcomes from Department of Veterans Affairs. Once again, diligence, perseverance and attention to detail were instrumental in seeing claims come full circle and properly adjudicated. For one veteran, a more than 20 year ordeal with VA concluded with an increase in service connected rating from 10% to 70% following initiation to re-evaluate in 2013. Several months were spent by the department compiling a rating increase package that VA would find difficult to refute. In October, 11 months after submitting the request for increase, the veteran was awarded 70% service connected disability; resulting in a monetary increase of \$1,181 per month. For a veteran unable to work, this greatly benefits quality of life. In all, VA pension related assistance accounted for 32% of department business during October while Service Connected Compensation claims and assistance accounted for 30%. General assistance and other VA benefits accounted for 38%.

*

- *Pensioners assistance, ongoing – 10*
- *Pension assistance, new – 4*
- *Pension (formal/informal) packages submitted – 2*
- *Pension decisions received – 1*
- *DIC assistance - 0*
- *Service connected (SC) disability, ongoing – 7*
- *SC assistance, new claim – 3*
- *SC assistance, appeals – 3*
- *SC (formal/informal) packages submitted – 2*
- *SC decisions received – 3*
- *General assistance and other – 17*

* These figures do not include general inquiries in which only information was provided via telephone or in-person. They represent actual services provided. Additionally, these figures do not factor in assistance for the same person on multiple occasions, i.e. 5 visits by the same person = 1.

Maintenance Report

In October of 2014 the maintenance department completed 19 electrical, 6 A/C , 6 plumbing, 13 building maintenance, 13 moving, 8 landscaping, and 36 miscellaneous work orders. We also put surplus items in lots and listed them for auction and had viewing of those lots.

**2014.11.17.07 Special Presentations.
None.**

2014.11.17.08 Discussion/Action to approve Budget Amendments #2013-18, #2013-19, #2013-20, and #2013-21 as the final budget amendments for Fiscal Year 2013-2014. **Cost:** None; **Speaker:** Judge Bonn/Larry Roberson; **Backup:** 1.

CALDWELL COUNTY, TEXAS
COUNTY AUDITOR'S OFFICE
INTERNAL MEMORANDUM

TO : Commissioners Court

DATE : November 12, 2014


FROM : LARRY ROBERSON

SUBJECT : Final Budget Amendments for Fiscal Year 2013-2014

Gentlemen:

Attached are Budget Amendments 2013-18 thru 2013-21. As in the past years these amendments are quite extensive and serve to generally adjust line items within the departments. Please let me know if you have any questions.

Thanks



CALDWELL COUNTY, TEXAS

SUMMARY OF FINAL BUDGET AMENDMENTS

FISCAL YEAR 2013-2014

AMENDMENT #	FUND(S)	REVENUE		EXPENDITURES	
		INCREASES	DECREASES	INCREASES	DECREASES
AMENDMENT #2013-18	GENERAL	\$ 737,370	\$ 802,741		
AMENDMENT #2013-19	GENERAL			\$ 1,453,585	\$ 665,325
AMENDMENT #2013-20	OTHER FUNDS	9,733,347	233,120		
AMENDMENT #2013-21	OTHER FUNDS			9,377,095	260,000
TOTALS		<u>\$ 10,470,717</u>	<u>\$ 1,035,861</u>	<u>\$ 10,830,680</u>	<u>\$ 925,325</u>
NET REVENUE INCREASE		\$ 9,434,856			
NET EXPENDITURE INCREASE				\$ 9,905,355	

CALDWELL COUNTY, TEXAS

BUDGET AMENDMENT #2013-18

YEAR END REVENUE BUDGET ADJUSTMENTS

FISCAL YEAR 2013-2014

<u>DESCRIPTION</u>	<u>ACCOUNT #</u>	<u>INCREASE</u>	<u>DECREASE</u>
<u>GENERAL FUND</u>			
CURRENT AD VALOREM TAXES	001-1000-0100		\$ 44,425
PENALTY & INTEREST	001-1000-0130	\$ 52,970	
EXCESS PAYMENTS	001-1000-0120	6,750	
REFUNDS AND DISCOUNTS	001-1000-0140		1,020
BEER LICENSE FEES	001-2000-0200		4,550
MOTOR VEHICLE FEES	001-2000-0240	10,500	
SUBDIVISION FEES	001-2000-0250		11,200
SANITATION PERMITS	001-2000-0290	20,100	
COUNTY SALES TAX	001-3000-0320	218,600	
VICTIMS ASSISTANCE GRANT	001-3000-0330		3,000
TOBACCO SETTLEMENT	001-3000-0340		7,540
BINGO	001-3000-0350		1,000
INTERGOVERNMENTAL - JAIL	001-3000-0360		203,850
INDIGENT DEFENSE GRANT	001-3000-0380	46,000	
COMMISSARY REIMBURSEMENT	001-3000-0401	6,500	
INMATE PROCESSING FEES	001-3000-0411		4,500
HAVA GRANT	001-3000-0421		10,000
CAPCOG COMMUNITY COLL EVENT	001-3000-0495		20,000
OJP - SCAAP PROGRAM	001-3000-0550		13,000
COUNTY JUDGE SUPPLEMENT	001-3000-0571	21,000	
TITLE IV-D	001-3000-0580		615
COURT-AT-LAW SUPPLEMENT	001-3000-0591		15,000
PSIC GRANT - COUNTY MATCH	001-3000-0601		12,111
HOG OUT PROGRAM	001-3000-0640	2,230	
COUNTY CLERK FEES	001-4000-0400		103,830
DISTRICT CLERK FEES	001-4000-0410		25,100
SHERIFF FEES	001-4000-0460		8,260
TAX COLLECTOR FEES	001-4000-0475		6,670
COUNTY JUDGE FEES	001-4000-0485		490
COUNTY ATTORNEY FEES	001-4000-0490		50,850
OTHER FEES	001-4000-0502		13,890
COMMISSION - STATE FEES	001-4000-0505		55,000
JP #1 FEES	001-4000-0510	30,190	
JP #2 FEES	001-4000-0520	44,640	
PRE-TRIAL BOND FEES	001-4000-0522		30
JP #3 FEES	001-4000-0530		21,200
JP #4 FEES	001-4000-0540	12,430	
DISTRICT ATTORNEY FEES	001-4000-0590		18,290
CONSTABLE PCT #1 FEES	001-4000-0610	5,820	

CALDWELL COUNTY, TEXAS

BUDGET AMENDMENT #2013-18

YEAR END REVENUE BUDGET ADJUSTMENTS

FISCAL YEAR 2013-2014

<u>DESCRIPTION</u>	<u>ACCOUNT #</u>	<u>INCREASE</u>	<u>DECREASE</u>
CONSTABLE PCT #2 FEES	001-4000-0611	5,340	
CONSTABLE PCT #3 FEES	001-4000-0630		460
CONSTABLE PCT #4 FEES	001-4000-0640		850
TRAFFIC FEES	001-4000-0680		10,760
DWI VIDEO FEES	001-4000-0720		740
INMATE TELEPHONE	001-4000-0740	4,570	
CHILD SAFETY FEES	001-4000-0750		100
BIRTH RECORD FEES	001-4000-0760		8,990
COUNTY CLERK FINES	001-5000-0700		55,970
DISTRICT CLERK FINES	001-5000-0710	4,500	
FINES - JP PCT #1	001-5000-0721	52,870	
FINES - JP PCT #2	001-5000-0722	9,580	
FINES - JP PCT #3	001-5000-0723		34,930
FINES - JP PCT #4	001-5000-0724		21,640
BOND FORFEITURES	001-5000-0765	29,980	
OTHER FINES AND FORFEITURES	001-5000-0770	5,360	
JUROR FINES	001-5000-0780	2,400	
INTEREST INCOME	001-6000-0900		8,880
MISCELLANEOUS REVENUE	001-6000-0910	12,290	
RENTAL REVENUES	001-6000-0930	12,330	
REIMBURSED REVENUES	001-6000-0940	77,150	
INSURANCE PROCEEDS	001-6000-0950	39,100	
DISPATCH SERVICES - MARTINDALE	001-6000-0970		4,000
REIMBURSED REVENUES - CCAD	001-6000-0980	1,590	
TRANSFERS FROM LAW LIBRARY	001-7000-1003	2,580	
TOTALS		<u>\$ 737,370</u>	<u>\$ 802,741</u>

CALDWELL COUNTY, TEXAS

BUDGET AMENDMENT #2013-19

YEAR END EXPENSE BUDGET AMENDMENTS

FISCAL YEAR 2013-2014

<u>DESCRIPTION</u>	<u>ACCOUNT #</u>	<u>INCREASE</u>	<u>DECREASE</u>
<u>GENERAL FUND</u>			
<u>TREASURER</u>			
SOCIAL SECURITY & MEDICARE TAX	001-2120-2010		\$ 450
GROUP MEDICAL INSURANCE	001-2120-2020	\$ 210	
EMPLOYEE BONDING	001-2120-2070	75	
OFFICE SUPPLIES	001-2120-3110	165	
<u>COUNTY AUDITOR</u>			
SOCIAL SECURITY & MEDICARE TAX	001-2130-2010		690
GROUP MEDICAL INSURANCE	001-2130-2020	50	
OFFICE SUPPLIES	001-2130-3120	640	
<u>TAX ASSESSOR/COLLECTOR</u>			
SOCIAL SECURITY & MEDICARE TAX	001-2140-2010		2,310
OFFICE SUPPLIES	001-2140-3110	870	
TRANSPORTATION	001-2140-4260	1,440	
<u>COUNTY CLERK</u>			
CLERKS & ASSISTANTS	001-2150-1040	10,260	
GROUP MEDICAL INSURANCE	001-2150-2020		11,450
POSTAGE	001-2150-3120	300	
TRANSPORTATION	001-2150-4260	50	
TRAINING	001-2150-4810	840	
<u>DISTRICT ATTORNEY</u>			
CLERKS & ASSISTANTS	001-3200-1040	2,670	
SOCIAL SECURITY & MEDICARE TAX	001-3200-2010		2,820
GROUP MEDICAL INSURANCE	001-3200-2020		3,660
RETIREMENT	001-3200-2030	150	
DUES & SUBSCRIPTIONS	001-3200-3050	1,060	
OFFICE SUPPLIES	001-3200-3110	2,600	
TRANSPORTATION	001-3200-4260		1,500
REPAIRS & MAINTENANCE	001-3200-4510	220	
TRAINING	001-3200-4810	1,280	
<u>DISTRICT CLERK</u>			
SOCIAL SECURITY & MEDICARE TAX	001-3220-2010		150
GROUP MEDICAL INSURANCE	001-3220-2020	150	
<u>DISTRICT COURT</u>			
COURT REPORTERS	001-3230-1080		2,240
SOCIAL SECURITY & MEDICARE TAX	001-3230-2010		1,830
GROUP MEDICAL INSURANCE	001-3230-2020	1,720	
OTHER INSURANCE	001-3230-2090	130	
OFFICE SUPPLIES	001-3230-3110	610	
ADMINISTRATIVE EXPENSES	001-3230-4011		5,570
VISITING COURT REPORTERS	001-3230-4030		2,070
EXPENSE OF APPEAL	001-3230-4040		13,800
ADULT - ATTY LITIGATION EXPENSE	001-3230-4080	5,060	

CALDWELL COUNTY, TEXAS

BUDGET AMENDMENT #2013-19

YEAR END EXPENSE BUDGET AMENDMENTS

FISCAL YEAR 2013-2014

<u>DESCRIPTION</u>	<u>ACCOUNT #</u>	<u>INCREASE</u>	<u>DECREASE</u>
ADULT - INVESTIGATIONS	001-3230-4090	3,650	
ADULT - EXPERT WITNESSES	001-3230-4150	8,090	
ADULT - INDIGENT ATTY FEES	001-3230-4160	64,120	
TRIAL EXPENSE	001-3230-4170		4,920
JUVENILE - INDIGENT ATTY FEES	001-3230-4180		53,450
JUVENILE - INVESTIGATIONS	001-3230-4200	500	
<u>COUNTY COURT AT LAW</u>			
COURT REPORTERS	001-3240-1080	20	
SOCIAL SECURITY & MEDICARE TAX	001-3240-2010		210
GROUP MEDICAL INSURANCE	001-3240-2020		1,150
OTHER INSURANCE	001-3240-2090	130	
VISITING COURT REPORTERS	001-3240-4030	1,010	
EXPENSE OF APPEAL	001-3240-4040	1,010	
ADULT - ATTY LITIGATION EXPENSE	001-3240-4080	2,150	
ADULT - EXPERT WITNESSES	001-3240-4150	1,200	
ADULT - INDIGENT ATTY FEES	001-3240-4160		5,000
JUVENILE - INDIGENT ATTY FEES	001-3240-4180		
JUVENILE - ATTY LITIGATION EXPENSE	001-3240-4189	570	
MISCELLANEOUS	001-3240-4850	270	
<u>JUSTICE OF THE PEACE - PCT 1</u>			
LONGEVITY	001-3251-1110	25	
GROUP MEDICAL INSURANCE	001-3251-2020		205
EMPLOYEE BONDING	001-3251-2070	50	
PROFESSIONAL SERVICES	001-3251-4110	130	
<u>JUSTICE OF THE PEACE - PCT 2</u>			
SOCIAL SECURITY & MEDICARE TAX	001-3252-2010		360
GROUP MEDICAL INSURANCE	001-3252-2020		220
EMPLOYEE BONDING	001-3252-2070		100
OFFICE SUPPLIES	001-3252-3110	200	
TRANSPORTATION	001-3252-4260		200
REPAIRS & MAINTENANCE	001-3252-4510	100	
JUROR EXPENSE	001-3252-4820	580	
<u>JUSTICE OF THE PEACE - PCT 3</u>			
SOCIAL SECURITY & MEDICARE TAX	001-3253-2010		530
GROUP MEDICAL INSURANCE	001-3253-2020	210	
RETIREMENT	001-3253-2030	10	
OFFICE SUPPLIES	001-3253-3110	870	
POSTAGE	001-3253-3120		920
TRANSPORTATION	001-3253-4260	50	
UTILITIES	001-3253-4410	120	
REPAIRS & MAINTENANCE	001-3253-4510	190	
<u>JUSTICE OF THE PEACE - PCT 4</u>			
SOCIAL SECURITY & MEDICARE TAX	001-3254-2010		340

CALDWELL COUNTY, TEXAS

BUDGET AMENDMENT #2013-19

YEAR END EXPENSE BUDGET AMENDMENTS

FISCAL YEAR 2013-2014

<u>DESCRIPTION</u>	<u>ACCOUNT #</u>	<u>INCREASE</u>	<u>DECREASE</u>
GROUP MEDICAL INSURANCE	001-3254-2020	210	
EMPLOYEE BONDING	001-3254-2070	130	
<u>COUNTY SHERIFF</u>			
DISPATCHERS	001-4300-1033	7,310	
DETECTIVES	001-4300-1034		2,110
PATROL DEPUTIES	001-4300-1035	9,110	
OTHER DEPUTIES	001-4300-1036	150	
CLERKS & ASSISTANTS	001-4300-1040		1,590
ANIMAL CONTROL OFFICERS	001-4300-1081	2,350	
VICTIM'S COORDINATOR & LIASON	001-4300-1091	1,690	
LONGEVITY	001-4300-1110		2,670
OVERTIME	001-4300-1150	7,820	
GROUP MEDICAL INSURANCE	001-4300-2020		26,760
RETIREMENT	001-4300-2030	1,960	
POSTAGE	001-4300-3120	620	
OPERATING SUPPLIES	001-4300-3130	12,070	
IMPOUND FEES	001-4300-3150		12,470
TRANSPORTATION	001-4300-4260	6,220	
REPAIRS & MAINTENANCE	001-4300-4510	20,700	
TRAINING	001-4300-4810	5,090	
<u>COUNTY JAIL</u>			
CLERKS & ASSISTANTS	001-4310-1040	2,690	
JAILERS	001-4310-1052		53,250
KITCHEN LABOR	001-4310-1053		4,200
SERGEANTS	001-4310-1054	6,180	
TRANSPORT OFFICERS	001-4310-1056		15,060
MEDICAL OFFICER	001-4310-1058		69,590
MAINTENANCE	001-4310-1062	1,090	
LONGEVITY	001-4310-1110		2,970
OVERTIME	001-4310-1150	63,470	
SOCIAL SECURITY & MEDICARE TAX	001-4310-2010		15,930
GROUP MEDICAL INSURANCE	001-4310-2020		84,940
RETIREMENT	001-4310-2030		3,650
FOOD SUPPLIES	001-4310-3100	39,050	
OPERATING SUPPLIES	001-4310-3130		14,130
PROFESSIONAL SERVICES	001-4310-4110	79,880	
INMATE MEDICATION	001-4310-4122	14,880	
EMPLOYEE PHYSICALS	001-4310-4135		2,400
SCAAP PROGRAM PAYMENTS	001-4310-4145	5,210	
TRANSPORTATION	001-4310-4260	900	
UTILITIES	001-4310-4410	440	
REPAIRS & MAINTENANCE	001-4310-4510	74,370	
VEHICLE MAINTENANCE	001-4310-4521	2,170	

CALDWELL COUNTY, TEXAS

BUDGET AMENDMENT #2013-19

YEAR END EXPENSE BUDGET AMENDMENTS

FISCAL YEAR 2013-2014

<u>DESCRIPTION</u>	<u>ACCOUNT #</u>	<u>INCREASE</u>	<u>DECREASE</u>
TRAINING	001-4310-4810	5,150	
<u>CONSTABLE - PCT 1</u>			
GROUP MEDICAL INSURANCE	001-4321-2020		750
DEPUTY CONSTABLE	001-4321-2100	1,300	
OFFICE SUPPLIES	001-4321-3110		180
TRANSPORTATION	001-4321-4260	800	
REPAIRS & MAINTENANCE	001-4321-4510		110
RENTALS	001-4321-4610		200
TRAINING	001-4321-4810		880
MISCELLANEOUS	001-4321-4850		500
MACHINERY & EQUIPMENT	001-4321-5310	520	
<u>CONSTABLE - PCT 2</u>			
EMPLOYEE BONDING	001-4322-2070	20	
OFFICE SUPPLIES	001-4322-3110	100	
TRANSPORTATION	001-4322-4260		330
REPAIRS & MAINTENANCE	001-4322-4510	210	
<u>CONSTABLE - PCT 3</u>			
SOCIAL SECURITY & MEDICARE TAX	001-4323-2010		580
GROUP MEDICAL INSURANCE	001-4323-2020	320	
OFFICE SUPPLIES	001-4323-3110	440	
TRANSPORTATION	001-4323-4260		580
REPAIRS & MAINTENANCE	001-4323-4510	500	
TRAINING	001-4323-4810	80	
MACHINERY & EQUIPMENT	001-4323-5310		180
<u>CONSTABLE - PCT 4</u>			
SOCIAL SECURITY & MEDICARE TAX	001-4324-2010		370
GROUP MEDICAL INSURANCE	001-4324-2020	300	
DEPUTY CONSTABLE	001-4324-2100		700
OFFICE SUPPLIES	001-4324-3110	70	
TRANSPORTATION	001-4324-4260	2,700	
REPAIRS & MAINTENANCE	001-4324-4510	230	
MACHINERY & EQUIPMENT	001-4324-5310		2,230
<u>HIGHWAY PATROL</u>			
RETIREMENT	001-4325-2030	10	
RENTALS	001-4325-4610		750
MACHINERY & EQUIPMENT	001-4325-5310	740	
<u>NON DEPARTMENTAL</u>			
WORKERS COMPENSATION INSURANCE	001-6510-2040		3,070
UNEMPLOYMENT INSURANCE	001-6510-2050		5,500
ACCIDENT INSURANCE	001-6510-2061	1,820	
DUES & SUBSCRIPTIONS	001-6510-3050		11,960
POSTAGE	001-6510-3120		930
DONATIONS	001-6510-3200		10,170

CALDWELL COUNTY, TEXAS

BUDGET AMENDMENT #2013-19

YEAR END EXPENSE BUDGET AMENDMENTS

FISCAL YEAR 2013-2014

<u>DESCRIPTION</u>	<u>ACCOUNT #</u>	<u>INCREASE</u>	<u>DECREASE</u>
PROFESSIONAL SERVICES	001-6510-4110	70,240	
AUTOPSY	001-6510-4123	17,700	
TELEPHONE	001-6510-4420		13,990
FAX & INTERNET	001-6510-4425		5,670
REPAIRS & MAINTENANCE	001-6510-4510	320	
RENTALS	001-6510-4610	1,820	
INSURANCE	001-6510-4845		28,950
CONTINGENCY	001-6510-4860		57,010
EE - RETENTION RAISES	001-6510-4905		25,000
<u>BUILDING MAINTENANCE</u>			
APPOINTED OFFICIAL	001-6520-1020	90	
CLERKS & ASSISTANTS	001-6520-1040	480	
LONGEVITY	001-6520-1110		570
TRANSPORTATION	001-6520-4260	1,010	
UTILITIES	001-6520-4410		15,450
REPAIRS & MAINTENANCE	001-6520-4510	12,380	
CONTRACTED SERVICES	001-6520-4527	2,060	
<u>ELECTIONS</u>			
TEMPORARY HELP	001-6550-1100	5,040	
SOCIAL SECURITY & MEDICARE TAX	001-6550-2010		2,520
RETIREMENT	001-6550-2030		1,040
OFFICE SUPPLIES	001-6550-3110	720	
POSTAGE	001-6550-3120		1,150
ADVERTISING & LEGAL NOTICES	001-6550-4310		7,280
REPAIRS & MAINTENANCE	001-6550-4510	7,630	
TRAINING	001-6550-4810		2,610
MISCELLANEOUS	001-6550-4850	1,210	
<u>COMMISSIONERS COURT</u>			
GROUP MEDICAL INSURANCE	001-6560-2020		6,360
TRANSPORTATION	001-6560-4260	2,980	
ADVERTISING & LEGAL NOTICES	001-6560-4310	3,380	
<u>VETERANS SERVICE OFFICER</u>			
TRANSPORTATION	001-6570-4260	60	
MISCELLANEOUS	001-6570-4850	360	
TRAINING	001-6570-4810		420
<u>HUMAN RESOURCES</u>			
CLERKS & ASSISTANTS	001-6580-1040	900	
GROUP MEDICAL INSURANCE	001-6580-2020		970
RETIREMENT	001-6580-2030	70	
<u>ENG. & SUBDIVISION</u>			
GROUP MEDICAL INSURANCE	001-6600-2020		2,180
PROFESSIONAL SERVICES	001-6600-4110	2,180	
<u>IT TECHNOLOGY</u>			

CALDWELL COUNTY, TEXAS

BUDGET AMENDMENT #2013-19

YEAR END EXPENSE BUDGET AMENDMENTS

FISCAL YEAR 2013-2014

<u>DESCRIPTION</u>	<u>ACCOUNT #</u>	<u>INCREASE</u>	<u>DECREASE</u>
GROUP MEDICAL INSURANCE	001-6610-2020		1,030
OFFICE SUPPLIES	001-6610-3110	1,030	
<u>CODE INVESTIGATOR</u>			
LONGEVITY	001-6640-1110	50	
RETIREMENT	001-6640-2030	10	
POSTAGE	001-6640-3120		550
COMMUNITY COLLECTION EVENTS	001-6640-3162		2,970
REPAIRS & MAINTENANCE	001-6640-4510		900
RENTALS	001-6640-4610	5,320	
<u>EMERGENCY MANAGEMENT</u>			
APPOINTED OFFICIAL	001-6650-1020	370	
TEMPORARY HELP	001-6650-1100		15,000
OFFICE SUPPLIES	001-6650-3110	1,830	
TRANSPORTATION	001-6650-4260	2,100	
EMERGENCY OPERATIONS CENTER	001-6650-4800	2,060	
MISCELLANEOUS	001-6650-4810	1,050	
MACHINERY & EQUIPMENT	001-6650-5310		2,060
<u>SANITATION</u>			
SOCIAL SECURITY & MEDICARE TAX	001-7610-2010		110
RETIREMENT	001-7610-2030	10	
OFFICE SUPPLIES	001-7610-3110		110
POSTAGE	001-7610-3120		80
TRANSPORTATION	001-7610-4260	30	
TRAINING	001-7610-4810	260	
<u>COUNTY WELFARE</u>			
SANITY HEARINGS	001-7620-4312		2,720
INDIGENT FUNERALS	001-7620-4320	2,720	
<u>COUNTY AGENT</u>			
STOCK SHOW EXPENSE	001-8700-3175	730	
RETIREMENT	001-8700-2030		730
<u>TRANSFERS OUT</u>			
TRANSFERS TO JUVENILE PROBATION	001-9000-4910	930	
TRANSFERS TO CAPITAL PROJECTS	001-9000-4930	757,600	
TRANSFERS TO UNIT ROAD FUND	001-9000-4940	49,980	
TRANSFERS TO COURTHOUSE SECURITY	001-9000-4961		60
TOTALS		<u>\$ 1,453,585</u>	<u>\$ 665,325</u>

CALDWELL COUNTY, TEXAS

BUDGET AMENDMENT #2013-20

YEAR END REVENUES - OTHER FUNDS

FISCAL YEAR 2013-2014

<u>DESCRIPTION</u>	<u>ACCOUNT #</u>	<u>INCREASE</u>	<u>DECREASE</u>
<u>UNIT ROAD FUND</u>			
CURRENT AD VALOREM TAXES	002-1000-0100		\$ 20
\$10 LICENSE FEES	002-1000-0160	\$ 25,870	
MOTOR VEHICLE REGISTRATION FEES	002-2000-0240		116,000
WEIGHT & AXLE FEES	002-2000-0260	24,370	
OTHER LICENSES & PERMITS	002-2000-0280	2,550	
FEMA REIMBURSEMENTS	002-3000-0300	97,620	
LATERAL ROAD FUNDS	002-3000-0395	750	
INTEREST INCOME	002-6000-0900	1,020	
MISCELLANEOUS REVENUE	002-6000-0910	6,230	
TRANSFERS FROM GENERAL FUND	002-7000-0102	49,980	
<u>RECORDS PRESERVATION</u>			
COUNTY CLERK FEES	003-4000-0400	20,800	
DISTRICT CLERK FEES	003-4000-0410	2,090	
COUNTY CLERK ARCHIVE FEES	003-4000-0450	2,350	
INTEREST INCOME	003-6000-0900	470	
<u>JUVENILE PROBATION</u>			
GRANT A REVENUES	004-3000-0355	56,507	
POSITIVE PARENTING PROGRAM	004-3000-0365		30,000
TYC PAYROLL SERVICES	004-3000-0412		2,500
TITLE IV-E FEDERAL REIMBURSEMENT	004-3000-0422		43,500
CSR REVENUE	004-3000-0506		18,000
PROBATION FEES	004-4000-0503		3,020
NON RESIDENTIAL SERVICES	004-4000-0530	36,420	
INTEREST INCOME	004-6000-0900	1,090	
TRANSFERS FROM GENERAL FUND	004-7000-1000	930	
<u>LAW LIBRARY FUND</u>			
LAW LIBRARY FEES	005-4000-0500	1,840	
<u>HOT CHECK FUND</u>			
HOT CHECK REVENUES	006-4000-0501	2,650	
INTEREST INCOME	006-6000-0900	460	
<u>RECORD MANAGEMENT FUND</u>			
COUNTY CLERK FEES	008-4000-0400	4,760	
DISTRICT CLERK FEES	008-4000-0410		3,710
INTEREST INCOME	008-6000-0900		120
<u>COURTHOUSE SECURITY FUND</u>			
COUNTY CLERK FEES	009-4000-0400		460

CALDWELL COUNTY, TEXAS

BUDGET AMENDMENT #2013-20

YEAR END REVENUES - OTHER FUNDS

FISCAL YEAR 2013-2014

<u>DESCRIPTION</u>	<u>ACCOUNT #</u>	<u>INCREASE</u>	<u>DECREASE</u>
DISTRICT CLERK FEES	009-4000-0410	180	
JP #1 FEES	009-4000-0510	2,320	
JP #2 FEES	009-4000-0520	930	
JP #3 FEES	009-4000-0530		2,370
JP #4 FEES	009-4000-0540		250
INTEREST INCOME	009-6000-0900	80	
TRANSFER FROM GENERAL FUND	009-7000-1000		60
<u>GRANT FUND</u>			
MATCHING FUNDS - CHAMP GRANT	010-3000-0030	62,620	
<u>DEBT SERVICE FUND</u>			
CURRENT AD VALOREM TAXES	012-1000-0100		10,960
DELINQUENT AD VALOREM TAXES	012-1000-0110	9,810	
PENALTIES & INTEREST	012-1000-0130	360	
TAX NOTE PROCEEDS	012-1000-1010	8,555,000	
<u>CAPITAL PROJECTS FUND</u>			
INTEREST INCOME	013-6000-0900	2,000	
TRANSFERS FROM GENERAL FUND	013-7000-1000	757,600	
<u>JUSTICE TECHNOLOGY FUND</u>			
COUNTY CLERK FEES	016-4000-0400		110
DISTRICT CLERK FEES	016-4000-0410	230	
JP #1 FEES	016-4000-0510	2,480	
JP #2 FEES	016-4000-0520	980	
JP #3 FEES	016-4000-0530		1,950
JP #4 FEES	016-4000-0540		90
TOTALS		<u>\$ 9,733,347</u>	<u>\$ 233,120</u>

CALDWELL COUNTY, TEXAS

BUDGET AMENDMENT #2013-21

YEAR END EXPENSES - OTHER FUNDS

FISCAL YEAR 2013-2014

DESCRIPTION	ACCOUNT #	INCREASE	DECREASE
<u>UNIT ROAD FUND</u>			
FOREMEN	002-1101-1024	8,200	
ROAD WORKERS	002-1101-1027		6,910
LONGEVITY	002-1101-1110		870
SOCIAL SECURITY & MEDICARE TAX	002-1101-2010		5,150
GROUP MEDICAL INSURANCE	002-1101-2020		7,970
UNIFORMS	002-1101-2140	5,690	
CULVERT PIPE	002-1101-3116	8,280	
OPERATING SUPPLIES	002-1101-3130		7,780
FLEXBASE MATERIALS	002-1101-3143	3,730	
AGGREGATE/GRAVEL	002-1101-3153	28,540	
FUEL	002-1101-3163		5,770
LUBRICANTS	002-1101-3170		4,540
SIGNS	002-1101-3181	540	
TIRES	002-1101-3190	520	
UTILITIES	002-1101-4410	140	
REPAIRS & MAINTENANCE	002-1101-4510		600
RENTALS	002-1101-4610		2,930
DUST CONTROL	002-1101-4620	4,420	
SEAL COATING	002-1101-4630	1,580	
LONGEVITY	002-1102-1110	25	
SOCIAL SECURITY & MEDICARE TAX	002-1102-2010		460
GROUP MEDICAL INSURANCE	002-1102-2020		270
SUPPLIES & SMALL TOOLS	002-1102-3136	410	
REPAIRS & MAINTENANCE	002-1102-4510	3,980	
LEAD MECHANIC	002-1103-1038		1,300
SHOP WORKERS	002-1103-1039		1,170
LONGEVITY	002-1103-1110	25	
SOCIAL SECURITY & MEDICARE TAX	002-1103-2010		480
GROUP MEDICAL INSURANCE	002-1103-2020		3,380
OPERATING SUPPLIES	002-1103-3135	1,410	
OIL & LUBRICANTS	002-1103-3165		5,930
TIRES	002-1103-3190		2,840
UTILITIES	002-1103-4410		4,000
REPAIRS & MAINTENANCE	002-1103-4510		810
<u>RECORDS PRESERVATION</u>			
SOCIAL SECURITY & MEDICARE TAX	003-3000-2010		190
RETIREMENT	003-3000-2030	\$ 10	
SOFTWARE MAINTENANCE	003-3000-4520	19,750	
MICROFILMING	003-3000-5330		15,125
CAPITAL OUTLAY	003-3000-5340		370
BINDING	003-3000-5615	186,620	

CALDWELL COUNTY, TEXAS

BUDGET AMENDMENT #2013-21

YEAR END EXPENSES - OTHER FUNDS

FISCAL YEAR 2013-2014

<u>DESCRIPTION</u>	<u>ACCOUNT #</u>	<u>INCREASE</u>	<u>DECREASE</u>
<u>JUVENILE PROBATION</u>			
RESIDENTIAL PLACEMENT	004-5400-5110	3,420	
SALARIES	004-5401-1021		24,740
OFFICE & LABOR	004-5401-1090	18,130	
SOCIAL SECURITY & MEDICARE TAX	004-5401-2010		18,360
GROUP MEDICAL INSURANCE	004-5401-2020	840	
EQUIPMENT REPAIRS	004-5401-3195	350	
UTILITIES	004-5401-4410	4,840	
MISCELLANEOUS	004-5401-4850	5,960	
RESIDENTIAL PLACEMENT	004-5403-5110	53,090	
RESIDENTIAL PLACEMENT	004-5407-5110		43,500
CAPITAL OUTLAY	004-5407-5311		2,500
RESIDENTIAL PLACEMENT	004-5408-5110		11,220
PSYCHOLOGICAL EVALUATIONS	004-5410-4115	9,120	
ELECTRONIC MONITORING	004-5410-4121	1,350	
PROFESSIONAL FEES	004-5411-3185	3,220	
<u>LAW LIBRARY FUND</u>			
OTHER CAPITAL OUTLAY	005-1000-5910		730
TRANSFER TO GENERAL FUND	005-9000-4901	2,590	
<u>HOT CHECK FUND</u>			
TRIAL EXPENSE	006-1000-4830		510
MISCELLANEOUS	006-1000-4850	510	
<u>RECORD MANAGEMENT FUND</u>			
TEMPORARY HELP	008-2000-1100		2,120
REPAIRS & MAINTENANCE	008-2000-4510		6,250
<u>COURTHOUSE SECURITY FUND</u>			
BALIFF	009-1000-1101	9,500	
LONGEVITY	009-1000-1110	80	
SOCIAL SECURITY & MEDICARE TAXES	009-1000-2010		570
GROUP MEDICAL INSURANCE	009-1000-2020		7,100
RETIREMENT	009-1000-2030	10	
TRAINING	009-1000-4810		1,500
<u>GRANT FUND</u>			
POSTAGE	010-1000-3120	150	
ENGINEERING FEES	010-1000-4013	5,140	
ADVERTISING & LEGAL NOTICES	010-1000-4310	870	

CALDWELL COUNTY, TEXAS

BUDGET AMENDMENT #2013-21

YEAR END EXPENSES - OTHER FUNDS

FISCAL YEAR 2013-2014

<u>DESCRIPTION</u>	<u>ACCOUNT #</u>	<u>INCREASE</u>	<u>DECREASE</u>
INSURANCE/BOND	010-1000-4835	180	
MISCELLANEOUS	010-1000-4850	11,180	
MACHINERY & EQUIPMENT	010-1000-5113	31,130	
<u>DEBT SERVICE FUND</u>			
TAX NOTES - SERIES 2012-2013	012-6000-4941	8,355,000	
DEBT ISSUE COSTS	012-6000-4949	116,515	
PAYING AGENT FEES	012-6000-4951	1,250	
INTEREST	012-6000-4990	85,510	
<u>CAPITAL PROJECTS FUND</u>			
TYLER FINANCIAL ACCOUNTING SYSTEM	013-1000-4610	149,410	
COURTHOUSE RESTORATION	013-2000-4410	25,350	
TAX OFFICE PROJECT	013-3000-5150	42,560	
<u>CALDWELL COUNTY JUSTICE CENTER</u>			
SURVEY & TESTING	013-6000-4010	1,040	
ARCHITECT FEES	013-6000-4025	25,150	
SITE PREPARATION COSTS	013-6000-4850	9,770	
BOND ATTORNEY FEES	013-6000-4045		125,215
505 FANNIN REMODELS	013-7000-5248	195,500	
<u>JUSTICE TECHNOLOGY FUND</u>			
SOFTWARE MAINTENANCE - JP#1	016-4000-0400	1,000	
SOFTWARE MAINTENANCE - JP#2	016-4000-0410	1,000	
SOFTWARE MAINTENANCE - JP#3	016-4000-0510	1,000	
SOFTWARE MAINTENANCE - JP#4	016-4000-0520	1,000	
		<u>\$ 9,377,095</u>	<u>\$ 260,000</u>

2014.11.17.09 Discussion/Action to select a real estate brokerage firm to represent Caldwell County in the sale the buildings at 201 E. San Antonio St. and 100 E. Market St. **Cost:** None; **Speaker:** Judge Bonn/Larry Roberson; **Backup:** None.

2014.11.17.10 Discussion/Action to approve smoke detector system to be installed and monitored by Taylor Security Systems, Inc., at 505 Fannin Street, Luling, Texas **Cost:** \$6,640 and \$35 per month, quarterly billing;
Speaker: Commissioner Roland;
Backup: 1.



TAYLOR SECURITY SYSTEMS, INC.

Celebrating 30 years in business

6801 South Highway 183, Austin, Texas 78744 Phone: (512) 385-0707

Date: October 20, 2014

To: Caldwell County Maintenance

From: Howard Taylor

Re: Luling JP & Tax office

Cost for fire alarm additions at the above referenced location will be \$6,640.00, no taxes included.

Scope of work: provide and install a manual evacuation system with 6 AVs, 6 strobes, 3 pull stations, 2 smoke detectors and 1 FACP. Add \$1,650.00 for 6 additional smoke detectors in common areas. Add \$210.00 to provide off-site monitoring of the alarm, which costs \$35.00 per month, billed quarterly. Caldwell County will provide a CAD floorplan for our submittals to the Fire Marshal. No permit fees have been included, as we assume these will be waived. No monitoring of duct detectors is included.

Price is good for 90-days and includes devices, wiring, installation, plan preparation, plan review by Authority Having Jurisdiction (AHJ), testing and certification.

The above proposal is based on and limited to the following. Any changes, additions, addenda other than what is listed herein will be considered a change order to this proposal and must be accepted before any additional labor or materials is to be provided.

Plans/drawings, bid off sheet(s):
Specifications:
Other:

Exclusions to proposal are as follows:

Historic calculations (e.g. batt calc, speaker calcs) required by AFD. Bldg. owner must provide these.

Duct detectors, relays not shown on referenced plans

Conduit

Sprinkler devices beyond main riser tamper and flow U.O.N.

AHJ re-inspection fees and expedited plan review fees

Installations and adjustment of water flow switch(es) and tamper switch(es) and water gongs/horns

Telephone lines to dialer (requires 2 dedicated POTS lines)

120v AC dedicated circuit to each fire alarm control panel and power booster(s)

Power for any devices not installed by us (including but not limited to: damper motors, duct smoke detectors, door hold open magnets, water gongs/horns)

Control wiring and/or raceways from the relay contacts to other systems. Usual interface point between the fire alarm and other systems is a relay controlled by the fire alarm system.

Should you have any question, please feel free to call.

Excel File: Luling JP

Remodel

Hereof is part of our proposal and will be agreed and binding upon acceptance of this proposal.

Invoicing for materials stored and/or provided will be invoiced monthly and further invoicing will follow on or before the 20th day of the each month to include labor and materials stored/provided within that period. It is our policy to hold the standard 10% retainer on all invoices and term for payment are set at net-30 days, unless otherwise stated and agreed upon. Payment not received within these terms will have necessary lien notices sent as part of Taylor Security Systems, Inc. policy. A copy of this policy will be provided upon request.

Taylor Security Systems, Inc. reserve the right to: cease work, not provide installation certificate and perform necessary inspections for any payments not current Also upon completion of the installation all payments for this project must be paid in full less established retainer held for said project before system is to be inspected and certified by us and the appropriated state or city department.



TAYLOR SECURITY SYSTEMS, INC.

Celebrating 30 years in business

6801 South Highway 183, Austin, Texas 78744 Phone: (512) 385-0707

Taylor Security Systems, Inc. will provide, upon request, only our standard Certificate of Liability Insurance for general, automobile and workers compensation/employer's liability and list necessary owners and/or agents as additionally insured. Any additional insurance requirements or higher limits than our standard coverage are not included in this proposal.

2014.11.17.11 Discussion/Action to apply for the FEMA Assistance to firefighters Grant Program (AFG) to purchase necessary P25 compliant radio equipment and provide the matching funds for the Caldwell County Fire Departments participation. Matching funds not to exceed \$50,000. **Cost:** Not to exceed \$50,000; **Speaker:** Commissioner Muñoz; **Backup:** 1.



Homeland Security and Emergency Management

Commissioners Court

Special AFG Grant Briefing

November 17th 2014

Assistance to Firefighters Grant (AFG)

- Award up to \$1,000,000 for populations under 100,000
- Cost Share
 - 5% - for less than 20,000 population
 - 10% - over 20,000 population

Current Problem

- 700/800 Mhz Radios are expensive
- VHF Coverage is poor
- VHF Radios overwhelmed during emergencies
- VHF Radios not compliant with P25 Standards
- VHF Radios do not have safety features
- VHF Radios do not talk to Bastrop or Travis Counties*
- VHF are single channel repeaters or line of sight

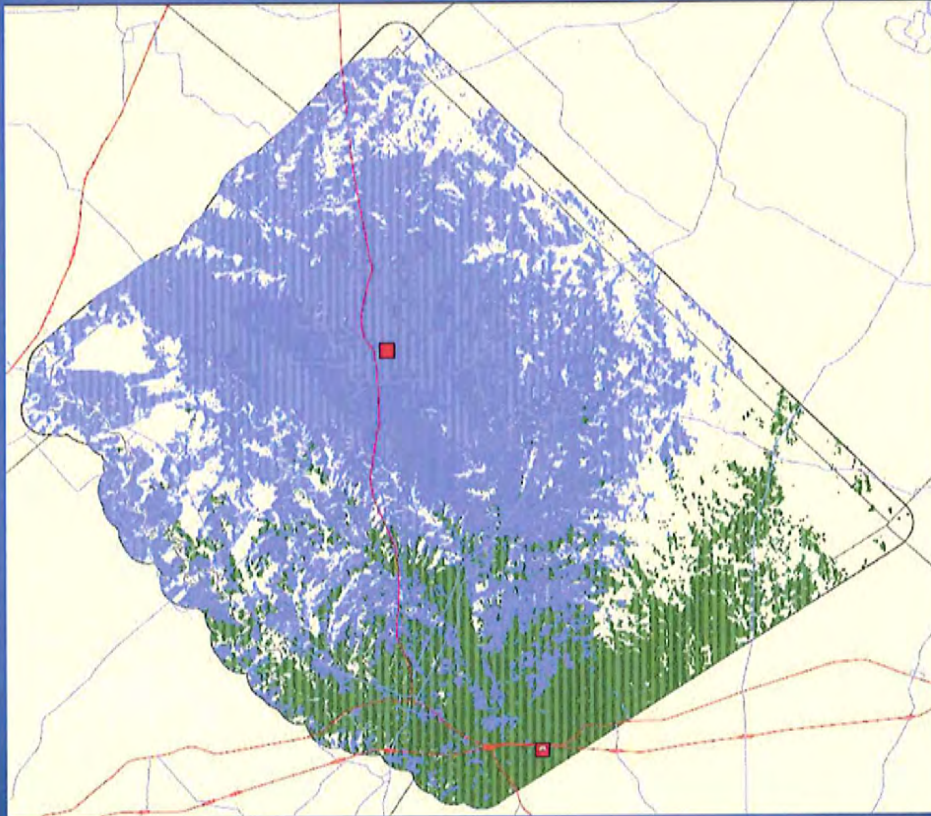
GATRRS

- Two Multi Channel Repeater Sites that can simulcast
- SO, Constables, EMS, PD's, OEM, DPS are on this network
- Mutual Aid with Travis County or Bastrop County (and others) is seamless
- Has nearly unlimited patching of talk groups

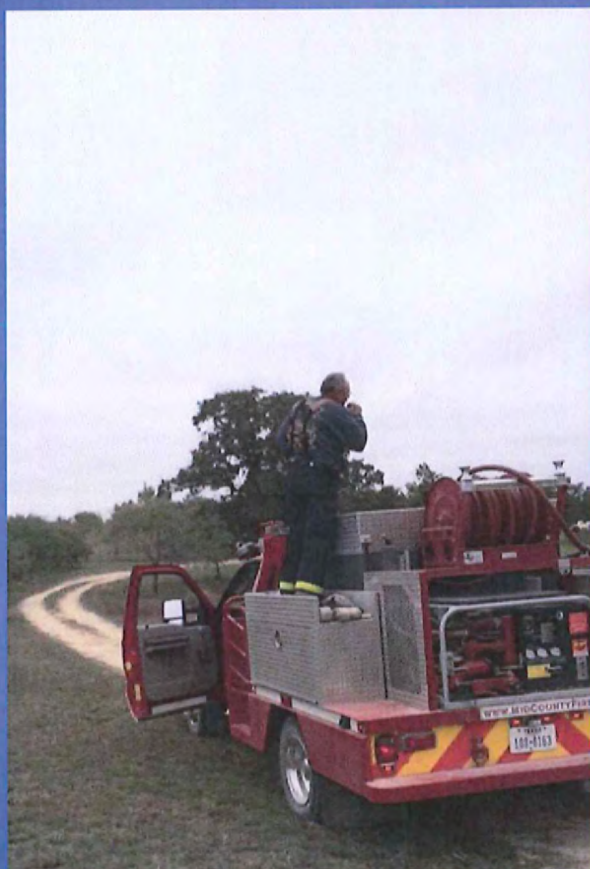
GATRRS

- Has two towers – we are looking at long term expansion and use agreements to expand coverage
- No one system can do everything, but this comes closest
 - TFS
 - Small VFD's Gonzales and Guadalupe Counties

GATRRS Coverage Map



Is anybody out there?



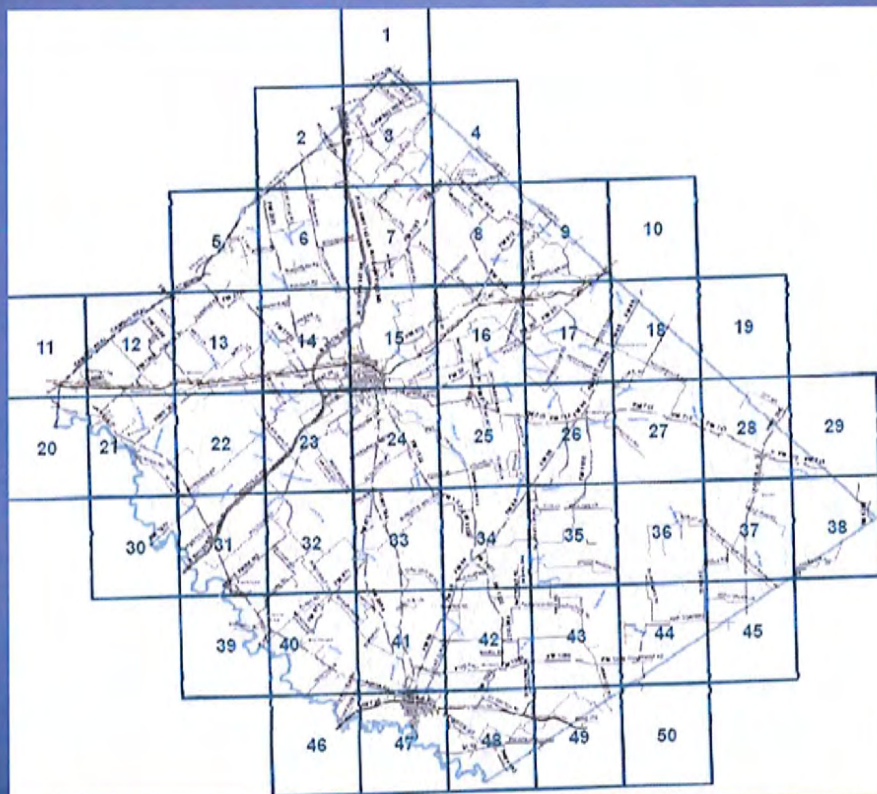
Assessed Needs

- Mobile Radios
 - Need _____
 - Cost per unit _____
- Hand Held Radios
 - Need _____
 - Cost per unit _____

Anticipated Costs

- Chart

Caldwell County Auto Aid All Hazards Planning





© Kelly Kitchens 2014

2014.11.17.12 Discussion/Action

regarding Burn Ban for Caldwell County. **Cost:** None; **Speaker:** Martin Ritchey; **Backup:** None.

2014.11.17.13 Discussion/Action to canvass the November 4th, 2014 general constitutional and special election results. **Cost:** None; **Speaker:** Judge Bonn; **Backup:** 1.

SUMMARY REPORT

Caldwell County, Texas
 General and Special Election
 November 4, 2014

CANVASS RESULTS

Run Date:11/12/14 12:36 PM

	VOTES	PERCENT
PRECINCTS COUNTED (OF 31)	31	100.00
REGISTERED VOTERS - TOTAL	21,229	
BALLOTS CAST - TOTAL	8,992	
VOTER TURNOUT - TOTAL		42.36

STRAIGHT PARTY

VOTE FOR 1		
REPUBLICAN PARTY (REP)	1,572	47.59
DEMOCRATIC PARTY (DEM)	1,650	49.95
LIBERTARIAN PARTY (LIB)	59	1.79
GREEN PARTY (GRN)	22	.67

US Senator

VOTE FOR 1		
John Cornyn (REP)	5,171	58.88
David M. Alameel (DEM)	3,076	35.03
Rebecca Paddock (LIB)	380	4.33
Emily "Spicybrown" Sanchez (GRN)	145	1.65
WRITE-IN	10	.11

US Representative, DIST 27 US REP 27

VOTE FOR 1		
Blake Farenthold (REP)	2,947	62.85
Wesley Reed (DEM)	1,549	33.03
Roxanne Simonson (LIB)	193	4.12

US Representative, DIST 35 US REP 35

VOTE FOR 1		
Susan Narvaiz (REP)	1,693	41.65
Lloyd Doggett (DEM)	2,226	54.76
Cory W. Bruner (LIB)	111	2.73
Kat Swift (GRN)	35	.86

Governor

VOTE FOR 1		
Greg Abbott (REP)	5,037	56.56
Wendy R. Davis (DEM)	3,578	40.18
Kathie Glass (LIB)	212	2.38
Brandon Parmer (GRN)	75	.84
WRITE-IN	4	.04

Lieutenant Governor

VOTE FOR 1		
Dan Patrick (REP)	5,042	57.08
Leticia Van de Putte (DEM)	3,441	38.96
Robert D. Butler (LIB)	293	3.32
Chandrankantha Courtney (GRN)	57	.65

Attorney General

VOTE FOR 1		
Ken Paxton (REP)	4,799	54.78
Sam Houston (DEM)	3,475	39.66
Jamie Balagia (LIB)	421	4.81
Jamar Osborne (GRN)	66	.75

Comptroller of Public Accounts

VOTE FOR 1		
Glenn Hegar (REP)	4,759	54.80
Mike Collier (DEM)	3,450	39.72
Ben Sanders (LIB)	347	4.00
Deb Shafro (GRN)	129	1.49

Commissioner of the General Land Office

VOTE FOR 1		
George P. Bush (REP)	4,928	56.55
John Cook (DEM)	3,295	37.81
Justin Knight (LIB)	354	4.06
Valerie Alessi (GRN)	137	1.57

Commissioner of Agriculture

VOTE FOR 1		
Sid Miller (REP)	4,479	52.11
Jim Hogan (DEM)	3,529	41.06
David (Rocky) Palmquist (LIB)	373	4.34
Kenneth Kendrick (GRN)	214	2.49

Railroad Commissioner

VOTE FOR 1		
Ryan Sitton (REP)	4,509	52.41
Steve Brown (DEM)	3,389	39.39
Mark A. Miller (LIB)	413	4.80
Martina Salinas (GRN)	293	3.41

Chief Justice, Supreme Court

VOTE FOR 1		
Nathan Hecht (REP)	4,676	54.40
William Moody (DEM)	3,502	40.74
Tom Oxford (LIB)	418	4.86

Justice, Supreme Court, Place 6, Unexp

VOTE FOR 1		
Jeff Brown (REP)	4,773	55.79
Lawrence Edward Meyers (DEM)	3,327	38.89
Mark Ash (LIB)	455	5.32

SUMMARY REPORT

Caldwell County, Texas
 General and Special Election
 November 4, 2014

CANVASS RESULTS

Run Date:11/12/14 12:36 PM

	VOTES	PERCENT		VOTES	PERCENT
Justice, Supreme Court, P7			County Judge		
VOTE FOR 1			VOTE FOR 1		
Jeff Boyd (REP)	4,689	54.62	Ken Schawe (REP)	4,594	52.37
Gina Benavides (DEM)	3,429	39.95	Fermin T. Islas (DEM)	4,179	47.63
Don Fulton (LIB)	375	4.37			
Charles E. Waterbury (GRN)	91	1.06			
Justice, Supreme Court, P8			County Crt at Law Judge		
VOTE FOR 1			VOTE FOR 1		
Phil Johnson (REP)	5,307	73.24	Edward L. Jarrett (DEM)	5,957	100.00
RS Roberto Koelsch (LIB)	1,097	15.14			
Jim Chisolm (GRN)	842	11.62			
Judge, CT of Criminal Appeals, P3			District Clerk		
VOTE FOR 1			VOTE FOR 1		
Bert Richardson (REP)	4,645	54.39	Tina Morgan Freeman (DEM)	5,902	100.00
John Granberg (DEM)	3,386	39.65			
Mark W. Bennett (LIB)	509	5.96			
Judge, CT of Criminal Appeals, P4			County Clerk		
VOTE FOR 1			VOTE FOR 1		
Kevin Patrick Yeary (REP)	5,111	69.98	Carol Holcomb (DEM)	5,914	100.00
Quanah Parker (LIB)	1,310	17.94			
Judith Sanders-Castro (GRN)	883	12.09			
Judge, CT of Criminal Appeals, P9			County Treasurer		
VOTE FOR 1			VOTE FOR 1		
David Newell (REP)	5,272	73.01	Lori Rangel (DEM)	5,837	100.00
William Bryan Strange, III (LIB)	1,301	18.02			
George Joseph Altgelt (GRN)	648	8.97			
State Representative, District 17			County Commissioner, Precinct No. 2		
VOTE FOR 1			VOTE FOR 1		
Tim Kleinschmidt (REP)	4,932	57.64	Fred Buchholtz (REP)	1,122	46.29
Carolyn Banks (DEM)	3,624	42.36	Edward "Eddie" Moses (DEM)	1,302	53.71
Chief Justice, 3rd Court of Appeals Dist			County Commissioner, Precinct No. 4		
VOTE FOR 1			VOTE FOR 1		
Jeff Rose (REP)	5,068	58.95	Darrel Scott (REP)	628	32.01
Diane Henson (DEM)	3,529	41.05	Joe Roland (DEM)	1,334	67.99
District Judge, 207th Judicial District			Justice of the Peace, Precinct No. 1		
VOTE FOR 1			VOTE FOR 1		
Jack Robison (REP)	5,741	100.00	Matt Kiely (REP)	1,719	61.99
			Aurora "Rhoda" Chavira (DEM)	1,054	38.01
Criminal District Attorney			Justice of the Peace, Precinct No. 2		
VOTE FOR 1			VOTE FOR 1		
Fred H. Weber (DEM)	5,999	100.00	Patricia E. Oringderff (REP)	1,083	44.98
			Homer Horne (DEM)	1,325	55.02
			Justice of the Peace, Precinct No. 3		
			VOTE FOR 1		
			Ben E. Brady (REP)	845	52.94
			MaryAlice Llanas (DEM)	751	47.06

SUMMARY REPORT

Caldwell County, Texas
 General and Special Election
 November 4, 2014

CANVASS RESULTS

Run Date:11/12/14 12:36 PM

VOTES PERCENT

Justice of the Peace, Precinct No. 4

VOTE FOR 1
 David LaPoint (REP) 767 39.15
 Raymond D. DeLe^n (DEM). 1,192 60.85

Constitutional Amendment

VOTE FOR 1
 For 6,012 74.06
 Against 2,106 25.94

EAA Director Dist 11, Caldwell Co

VOTE FOR 1
 Amy Lea S. J. Akers 1,528 38.46
 Ken Doran 1,257 31.64
 Mark Taylor. 1,188 29.90

Place 1 ACC Trustee

VOTE FOR 1
 Mark J. Williams 22 48.89
 Tim Mahoney. 23 51.11

Place 2 ACC Trustee

VOTE FOR 1
 Jade Chang Sheppard 11 24.44
 Gigi Edwards Bryant 11 24.44
 Bob Allen 17 37.78
 Jonathan Mathers 3 6.67
 Michael J. Lewis 2 4.44
 Robb J. Misso 1 2.22

Place 3 ACC Trustee

VOTE FOR 1
 Nan McRaven. 32 100.00

ACC BOND PROPOSITION 1

VOTE FOR 1
 For 30 37.50
 Against 50 62.50

ACC BOND PROPOSITION 2

VOTE FOR 1
 For 36 43.37
 Against 47 56.63

ACC TAX RATE ELECTION

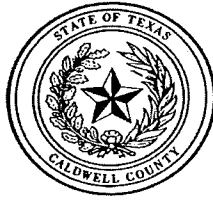
VOTE FOR 1
 For 16 40.00
 Against 24 60.00

2014.11.17.14 Discussion/Action to approve the 2015 Caldwell County Employee Holiday calendar. **Cost:** None; **Speaker:** Judge Bonn; **Backup:** 1

Tom D. Bonn
County Judge
512 398-1808

Lori Rangel
County Treasurer
512 398-1800

Larry Roberson
County Auditor
512 398-1801



Caldwell County Courthouse
110 South Main Street
Lockhart, TX 78644
Fax: 512 398-1828

Alfredo Muñoz
Commissioner Precinct 1

Fred Buchholtz
Commissioner Precinct 2

Neto Madrigal
Commissioner Precinct 3

Joe I. Roland
Commissioner Precinct 4

November 17th, 2014

TO ALL CALDWELL COUNTY EMPLOYEES:

Please be advised that in a regular meeting on November 10, 2014, the Caldwell County Commissioners Court approved the following 2015 Holidays for Caldwell County Employees:

New Year's Day	January 1
Martin Luther King, Jr. Day	January 19
Good Friday	April 3
Memorial Day	May 25
Independence Day	July 3
Labor Day	September 7
Veterans Day	November 11
Thanksgiving Day	November 25-27
Christmas Day	December 23 (½ day)
	December 24
	December 25

In addition to the thirteen (13½) regular holidays, one (1) floating holiday will be given to each employee. This holiday can be taken at anytime by the employee with his/her supervisor's consent. However, no two employees should take the same floating holiday leaving a department short-handed, and no office should be closed other than on regular holidays approved by Commissioners Court.

One (1) longevity leave day will also be given for every three (3) years completed with the County. For instance, 3-5 years one (1) additional day may be taken, 6-8 years two (2) additional days may be taken, 9-11 three (3), the maximum being 5 days for 15 years completed. This leave became effective January 1, 1994, and must first be worked out with his/her supervisor. This leave goes from anniversary to anniversary, as do all of the holidays given.

Respectfully,

Tom D. Bonn
County Judge

Calendar for year 2015 (United States)

<p>January</p> <table border="1"> <tr><td>Su</td><td>Mo</td><td>Tu</td><td>We</td><td>Th</td><td>Fr</td><td>Sa</td></tr> <tr><td></td><td></td><td></td><td>1</td><td>2</td><td>3</td><td></td></tr> <tr><td>4</td><td>5</td><td>6</td><td>7</td><td>8</td><td>9</td><td>10</td></tr> <tr><td>11</td><td>12</td><td>13</td><td>14</td><td>15</td><td>16</td><td>17</td></tr> <tr><td>18</td><td>19</td><td>20</td><td>21</td><td>22</td><td>23</td><td>24</td></tr> <tr><td>25</td><td>26</td><td>27</td><td>28</td><td>29</td><td>30</td><td>31</td></tr> </table>	Su	Mo	Tu	We	Th	Fr	Sa				1	2	3		4	5	6	7	8	9	10	11	12	13	14	15	16	17	18	19	20	21	22	23	24	25	26	27	28	29	30	31	<p>February</p> <table border="1"> <tr><td>Su</td><td>Mo</td><td>Tu</td><td>We</td><td>Th</td><td>Fr</td><td>Sa</td></tr> <tr><td>1</td><td>2</td><td>3</td><td>4</td><td>5</td><td>6</td><td>7</td></tr> <tr><td>8</td><td>9</td><td>10</td><td>11</td><td>12</td><td>13</td><td>14</td></tr> <tr><td>15</td><td>16</td><td>17</td><td>18</td><td>19</td><td>20</td><td>21</td></tr> <tr><td>22</td><td>23</td><td>24</td><td>25</td><td>26</td><td>27</td><td>28</td></tr> </table>	Su	Mo	Tu	We	Th	Fr	Sa	1	2	3	4	5	6	7	8	9	10	11	12	13	14	15	16	17	18	19	20	21	22	23	24	25	26	27	28	<p>March</p> <table border="1"> <tr><td>Su</td><td>Mo</td><td>Tu</td><td>We</td><td>Th</td><td>Fr</td><td>Sa</td></tr> <tr><td>1</td><td>2</td><td>3</td><td>4</td><td>5</td><td>6</td><td>7</td></tr> <tr><td>8</td><td>9</td><td>10</td><td>11</td><td>12</td><td>13</td><td>14</td></tr> <tr><td>15</td><td>16</td><td>17</td><td>18</td><td>19</td><td>20</td><td>21</td></tr> <tr><td>22</td><td>23</td><td>24</td><td>25</td><td>26</td><td>27</td><td>28</td></tr> <tr><td>29</td><td>30</td><td>31</td><td></td><td></td><td></td><td></td></tr> </table>	Su	Mo	Tu	We	Th	Fr	Sa	1	2	3	4	5	6	7	8	9	10	11	12	13	14	15	16	17	18	19	20	21	22	23	24	25	26	27	28	29	30	31																		
Su	Mo	Tu	We	Th	Fr	Sa																																																																																																																																	
			1	2	3																																																																																																																																		
4	5	6	7	8	9	10																																																																																																																																	
11	12	13	14	15	16	17																																																																																																																																	
18	19	20	21	22	23	24																																																																																																																																	
25	26	27	28	29	30	31																																																																																																																																	
Su	Mo	Tu	We	Th	Fr	Sa																																																																																																																																	
1	2	3	4	5	6	7																																																																																																																																	
8	9	10	11	12	13	14																																																																																																																																	
15	16	17	18	19	20	21																																																																																																																																	
22	23	24	25	26	27	28																																																																																																																																	
Su	Mo	Tu	We	Th	Fr	Sa																																																																																																																																	
1	2	3	4	5	6	7																																																																																																																																	
8	9	10	11	12	13	14																																																																																																																																	
15	16	17	18	19	20	21																																																																																																																																	
22	23	24	25	26	27	28																																																																																																																																	
29	30	31																																																																																																																																					
<p>April</p> <table border="1"> <tr><td>Su</td><td>Mo</td><td>Tu</td><td>We</td><td>Th</td><td>Fr</td><td>Sa</td></tr> <tr><td></td><td></td><td></td><td>1</td><td>2</td><td>3</td><td>4</td></tr> <tr><td>5</td><td>6</td><td>7</td><td>8</td><td>9</td><td>10</td><td>11</td></tr> <tr><td>12</td><td>13</td><td>14</td><td>15</td><td>16</td><td>17</td><td>18</td></tr> <tr><td>19</td><td>20</td><td>21</td><td>22</td><td>23</td><td>24</td><td>25</td></tr> <tr><td>26</td><td>27</td><td>28</td><td>29</td><td>30</td><td></td><td></td></tr> </table>	Su	Mo	Tu	We	Th	Fr	Sa				1	2	3	4	5	6	7	8	9	10	11	12	13	14	15	16	17	18	19	20	21	22	23	24	25	26	27	28	29	30			<p>May</p> <table border="1"> <tr><td>Su</td><td>Mo</td><td>Tu</td><td>We</td><td>Th</td><td>Fr</td><td>Sa</td></tr> <tr><td></td><td></td><td></td><td></td><td></td><td>1</td><td>2</td></tr> <tr><td>3</td><td>4</td><td>5</td><td>6</td><td>7</td><td>8</td><td>9</td></tr> <tr><td>10</td><td>11</td><td>12</td><td>13</td><td>14</td><td>15</td><td>16</td></tr> <tr><td>17</td><td>18</td><td>19</td><td>20</td><td>21</td><td>22</td><td>23</td></tr> <tr><td>24</td><td>25</td><td>26</td><td>27</td><td>28</td><td>29</td><td>30</td></tr> <tr><td>31</td><td></td><td></td><td></td><td></td><td></td><td></td></tr> </table>	Su	Mo	Tu	We	Th	Fr	Sa						1	2	3	4	5	6	7	8	9	10	11	12	13	14	15	16	17	18	19	20	21	22	23	24	25	26	27	28	29	30	31							<p>June</p> <table border="1"> <tr><td>Su</td><td>Mo</td><td>Tu</td><td>We</td><td>Th</td><td>Fr</td><td>Sa</td></tr> <tr><td></td><td></td><td>1</td><td>2</td><td>3</td><td>4</td><td>5</td></tr> <tr><td>6</td><td>7</td><td>8</td><td>9</td><td>10</td><td>11</td><td>12</td></tr> <tr><td>13</td><td>14</td><td>15</td><td>16</td><td>17</td><td>18</td><td>19</td></tr> <tr><td>20</td><td>21</td><td>22</td><td>23</td><td>24</td><td>25</td><td>26</td></tr> <tr><td>27</td><td>28</td><td>29</td><td>30</td><td></td><td></td><td></td></tr> </table>	Su	Mo	Tu	We	Th	Fr	Sa			1	2	3	4	5	6	7	8	9	10	11	12	13	14	15	16	17	18	19	20	21	22	23	24	25	26	27	28	29	30			
Su	Mo	Tu	We	Th	Fr	Sa																																																																																																																																	
			1	2	3	4																																																																																																																																	
5	6	7	8	9	10	11																																																																																																																																	
12	13	14	15	16	17	18																																																																																																																																	
19	20	21	22	23	24	25																																																																																																																																	
26	27	28	29	30																																																																																																																																			
Su	Mo	Tu	We	Th	Fr	Sa																																																																																																																																	
					1	2																																																																																																																																	
3	4	5	6	7	8	9																																																																																																																																	
10	11	12	13	14	15	16																																																																																																																																	
17	18	19	20	21	22	23																																																																																																																																	
24	25	26	27	28	29	30																																																																																																																																	
31																																																																																																																																							
Su	Mo	Tu	We	Th	Fr	Sa																																																																																																																																	
		1	2	3	4	5																																																																																																																																	
6	7	8	9	10	11	12																																																																																																																																	
13	14	15	16	17	18	19																																																																																																																																	
20	21	22	23	24	25	26																																																																																																																																	
27	28	29	30																																																																																																																																				
<p>July</p> <table border="1"> <tr><td>Su</td><td>Mo</td><td>Tu</td><td>We</td><td>Th</td><td>Fr</td><td>Sa</td></tr> <tr><td></td><td></td><td></td><td>1</td><td>2</td><td>3</td><td>4</td></tr> <tr><td>5</td><td>6</td><td>7</td><td>8</td><td>9</td><td>10</td><td>11</td></tr> <tr><td>12</td><td>13</td><td>14</td><td>15</td><td>16</td><td>17</td><td>18</td></tr> <tr><td>19</td><td>20</td><td>21</td><td>22</td><td>23</td><td>24</td><td>25</td></tr> <tr><td>26</td><td>27</td><td>28</td><td>29</td><td>30</td><td>31</td><td></td></tr> </table>	Su	Mo	Tu	We	Th	Fr	Sa				1	2	3	4	5	6	7	8	9	10	11	12	13	14	15	16	17	18	19	20	21	22	23	24	25	26	27	28	29	30	31		<p>August</p> <table border="1"> <tr><td>Su</td><td>Mo</td><td>Tu</td><td>We</td><td>Th</td><td>Fr</td><td>Sa</td></tr> <tr><td></td><td></td><td></td><td></td><td></td><td></td><td>1</td></tr> <tr><td>2</td><td>3</td><td>4</td><td>5</td><td>6</td><td>7</td><td>8</td></tr> <tr><td>9</td><td>10</td><td>11</td><td>12</td><td>13</td><td>14</td><td>15</td></tr> <tr><td>16</td><td>17</td><td>18</td><td>19</td><td>20</td><td>21</td><td>22</td></tr> <tr><td>23</td><td>24</td><td>25</td><td>26</td><td>27</td><td>28</td><td>29</td></tr> <tr><td>30</td><td>31</td><td></td><td></td><td></td><td></td><td></td></tr> </table>	Su	Mo	Tu	We	Th	Fr	Sa							1	2	3	4	5	6	7	8	9	10	11	12	13	14	15	16	17	18	19	20	21	22	23	24	25	26	27	28	29	30	31						<p>September</p> <table border="1"> <tr><td>Su</td><td>Mo</td><td>Tu</td><td>We</td><td>Th</td><td>Fr</td><td>Sa</td></tr> <tr><td></td><td></td><td>1</td><td>2</td><td>3</td><td>4</td><td>5</td></tr> <tr><td>6</td><td>7</td><td>8</td><td>9</td><td>10</td><td>11</td><td>12</td></tr> <tr><td>13</td><td>14</td><td>15</td><td>16</td><td>17</td><td>18</td><td>19</td></tr> <tr><td>20</td><td>21</td><td>22</td><td>23</td><td>24</td><td>25</td><td>26</td></tr> <tr><td>27</td><td>28</td><td>29</td><td>30</td><td></td><td></td><td></td></tr> </table>	Su	Mo	Tu	We	Th	Fr	Sa			1	2	3	4	5	6	7	8	9	10	11	12	13	14	15	16	17	18	19	20	21	22	23	24	25	26	27	28	29	30			
Su	Mo	Tu	We	Th	Fr	Sa																																																																																																																																	
			1	2	3	4																																																																																																																																	
5	6	7	8	9	10	11																																																																																																																																	
12	13	14	15	16	17	18																																																																																																																																	
19	20	21	22	23	24	25																																																																																																																																	
26	27	28	29	30	31																																																																																																																																		
Su	Mo	Tu	We	Th	Fr	Sa																																																																																																																																	
						1																																																																																																																																	
2	3	4	5	6	7	8																																																																																																																																	
9	10	11	12	13	14	15																																																																																																																																	
16	17	18	19	20	21	22																																																																																																																																	
23	24	25	26	27	28	29																																																																																																																																	
30	31																																																																																																																																						
Su	Mo	Tu	We	Th	Fr	Sa																																																																																																																																	
		1	2	3	4	5																																																																																																																																	
6	7	8	9	10	11	12																																																																																																																																	
13	14	15	16	17	18	19																																																																																																																																	
20	21	22	23	24	25	26																																																																																																																																	
27	28	29	30																																																																																																																																				
<p>October</p> <table border="1"> <tr><td>Su</td><td>Mo</td><td>Tu</td><td>We</td><td>Th</td><td>Fr</td><td>Sa</td></tr> <tr><td></td><td></td><td></td><td></td><td>1</td><td>2</td><td>3</td></tr> <tr><td>4</td><td>5</td><td>6</td><td>7</td><td>8</td><td>9</td><td>10</td></tr> <tr><td>11</td><td>12</td><td>13</td><td>14</td><td>15</td><td>16</td><td>17</td></tr> <tr><td>18</td><td>19</td><td>20</td><td>21</td><td>22</td><td>23</td><td>24</td></tr> <tr><td>25</td><td>26</td><td>27</td><td>28</td><td>29</td><td>30</td><td>31</td></tr> </table>	Su	Mo	Tu	We	Th	Fr	Sa					1	2	3	4	5	6	7	8	9	10	11	12	13	14	15	16	17	18	19	20	21	22	23	24	25	26	27	28	29	30	31	<p>November</p> <table border="1"> <tr><td>Su</td><td>Mo</td><td>Tu</td><td>We</td><td>Th</td><td>Fr</td><td>Sa</td></tr> <tr><td>1</td><td>2</td><td>3</td><td>4</td><td>5</td><td>6</td><td>7</td></tr> <tr><td>8</td><td>9</td><td>10</td><td>11</td><td>12</td><td>13</td><td>14</td></tr> <tr><td>15</td><td>16</td><td>17</td><td>18</td><td>19</td><td>20</td><td>21</td></tr> <tr><td>22</td><td>23</td><td>24</td><td>25</td><td>26</td><td>27</td><td>28</td></tr> <tr><td>29</td><td>30</td><td></td><td></td><td></td><td></td><td></td></tr> </table>	Su	Mo	Tu	We	Th	Fr	Sa	1	2	3	4	5	6	7	8	9	10	11	12	13	14	15	16	17	18	19	20	21	22	23	24	25	26	27	28	29	30						<p>December</p> <table border="1"> <tr><td>Su</td><td>Mo</td><td>Tu</td><td>We</td><td>Th</td><td>Fr</td><td>Sa</td></tr> <tr><td></td><td></td><td>1</td><td>2</td><td>3</td><td>4</td><td>5</td></tr> <tr><td>6</td><td>7</td><td>8</td><td>9</td><td>10</td><td>11</td><td>12</td></tr> <tr><td>13</td><td>14</td><td>15</td><td>16</td><td>17</td><td>18</td><td>19</td></tr> <tr><td>20</td><td>21</td><td>22</td><td>23</td><td>24</td><td>25</td><td>26</td></tr> <tr><td>27</td><td>28</td><td>29</td><td>30</td><td>31</td><td></td><td></td></tr> </table>	Su	Mo	Tu	We	Th	Fr	Sa			1	2	3	4	5	6	7	8	9	10	11	12	13	14	15	16	17	18	19	20	21	22	23	24	25	26	27	28	29	30	31									
Su	Mo	Tu	We	Th	Fr	Sa																																																																																																																																	
				1	2	3																																																																																																																																	
4	5	6	7	8	9	10																																																																																																																																	
11	12	13	14	15	16	17																																																																																																																																	
18	19	20	21	22	23	24																																																																																																																																	
25	26	27	28	29	30	31																																																																																																																																	
Su	Mo	Tu	We	Th	Fr	Sa																																																																																																																																	
1	2	3	4	5	6	7																																																																																																																																	
8	9	10	11	12	13	14																																																																																																																																	
15	16	17	18	19	20	21																																																																																																																																	
22	23	24	25	26	27	28																																																																																																																																	
29	30																																																																																																																																						
Su	Mo	Tu	We	Th	Fr	Sa																																																																																																																																	
		1	2	3	4	5																																																																																																																																	
6	7	8	9	10	11	12																																																																																																																																	
13	14	15	16	17	18	19																																																																																																																																	
20	21	22	23	24	25	26																																																																																																																																	
27	28	29	30	31																																																																																																																																			

Holidays and Observances:			
Jan 1	New Year's Day	Nov 11	Veterans Day
Jan 19	Marlin Luther King Day	Nov 26	Thanksgiving Day
Feb 14	Valentine's Day	Dec 24	Christmas Eve
Feb 16	Presidents' Day	Dec 25	Christmas Day
Apr 5	Easter Sunday	Dec 31	New Year's Eve
Apr 13	Thomas Jefferson's Birthday		
May 10	Mothers' Day		
May 25	Memorial Day		
Jun 21	Fathers' Day		
Jul 3	'Independence Day' observed		
Jul 4	Independence Day		
Sep 7	Labor Day		
Oct 12	Columbus Day (Most regions)		
Oct 31	Halloween		

Calendar generated on www.timeanddate.com/calendar

2014.11.17.15 Discussion/Action to approve the Caldwell County Employee Manual. **Cost:** None; **Speaker:** Judge Bonn/Deborah Kortan; **Backup:** None.

2014.11.17.16 Adjournment